



Order: (888)-282-5810 (Phone)  
(818)-707-0392 (Fax)  
[order@abiocode.com](mailto:order@abiocode.com)  
Web: [www.Abiocode.com](http://www.Abiocode.com)

---

## **FLT3L (N) Antibody, Rabbit Polyclonal**

**Cat#: R0095-2**

**Quantity: 100 ul**

**Predicted M.W.: 26 kDa**

**Lot#: Refer to vial**

**Application: WB, ELISA**

**Uniprot ID: P49772**

### **Background:**

Fms-related tyrosine kinase 3 ligand (FLT3L) is a cytokine that stimulates the proliferation of early hematopoietic cells. It synergizes well with a number of other colony stimulating factors and interleukins. Structurally it is similar to stem cell factor and colony stimulating factor 1.

### **Other Names:**

FIt3lg, Ly72L

### **Source and Purity:**

Rabbit polyclonal antibodies were produced by immunizing animals with a GST-fusion protein containing the N-terminal propeptide region of mouse FLT3L. Antibodies were purified by affinity purification using immunogen.

### **Storage Buffer and Condition:**

Supplied in 1 x PBS (pH 7.4), 100 ug/ml BSA, 40% Glycerol, 0.01% NaN<sub>3</sub>. Store at -20 °C. Stable for 6 months from date of receipt.

### **Species Specificity:**

Mouse

### **Recommended Conditions:**

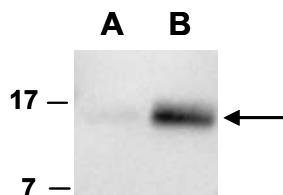
WB: 1:1,000-1:5,000 (detect recombinant protein)

ELISA: > 10,000 (detect immunogen)

1:1,000- 1:10,000 (detect native recombinant protein in a direct ELISA assay).

Suitable for using as ELISA capture antibody.

**Product Data:**



**Fig 1.** Western blot of recombinant mouse FLT3L protein (A: 10 ng; B: 100 ng), using Ab (R0095-2) at RT for 2 h.