



Order: (888)-282-5810 (Phone)  
(818)-707-0392 (Fax)  
[order@abiocode.com](mailto:order@abiocode.com)  
Web: [www.Abiocode.com](http://www.Abiocode.com)

---

## **PR1 (N) Antibody, Rabbit Polyclonal**

**Cat#: R3390-1**

**Quantity: 100 ul**

**Predicted I Observed M.W.: 18 kDa**

**Lot#: Refer to vial**

**Application: WB**

**Uniprot ID: P33154**

### **Background:**

PR1 gene expression is induced in response to a variety of pathogens. It is a useful molecular marker for the SAR response. Though the Genbank record for the cDNA associated to this gene is called 'PR-1-like', the sequence actually corresponds to PR1. Expression of this gene is salicylic-acid inducible.

### **Other Names:**

Pathogenesis-related protein 1, At2g14610, T6B13.15, ATPR1

### **Source and Purity:**

Rabbit polyclonal antibodies were produced by immunizing animals with a GST-fusion protein containing the N-terminal region of *arabidopsis thaliana* PR1 (AT2G14610). Antibodies were purified by affinity purification using immunogen.

### **Storage Buffer and Condition:**

Supplied in 1 x PBS (pH 7.4), 100 ug/ml BSA, 40% Glycerol, 0.01% NaN<sub>3</sub>. Store at -20 °C. Stable for 6 months from date of receipt.

### **Species Specificity:**

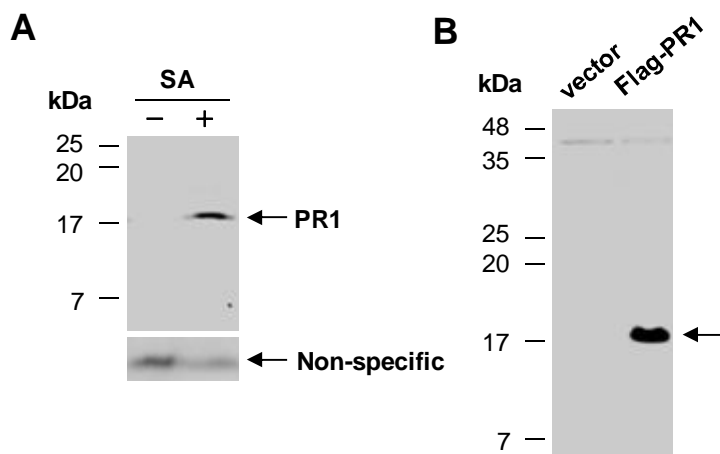
*Arabidopsis thaliana*

### **Tested Applications:**

WB: 1:500-1:2,000 (detect endogenous protein\*)

\*: The apparent protein size on WB may be different from the calculated M.W. due to modifications.

**Product Data:**



**Fig 1. A)** Western blot analysis of equal amounts of protein extracts from wild type *arabidopsis* leaves without (-) or with (+) 1mM salicylic acid (SA) treatment for 17 hr; using anti-PR1 (N) (R3390-1) at RT for 2 h. SA treatment is known to induce PR1 protein. **B)** Same as in **A** except that protein extracts from human 293T cells transfected with a vector or Flag-PR1 were used.