



Order: (888)-282-5810 (Phone)  
(818)-707-0392 (Fax)  
[order@abiocode.com](mailto:order@abiocode.com)  
Web: [www.Abiocode.com](http://www.Abiocode.com)

---

## **RPA3 (M) Antibody, Rabbit Polyclonal**

**Cat#: R1601-1**

**Quantity: 100 ul**

**Predicted | Observed M.W.: 14 kDa**

**Lot#: Refer to vial**

**Application: WB**

**Uniprot ID: P35244**

### **Background:**

As part of the heterotrimeric replication protein A complex (RPA/RP-A), RPA3 binds and stabilizes single-stranded DNA intermediates that form during DNA replication or upon DNA stress. It prevents their reannealing and in parallel, recruits and activates different proteins and complexes involved in DNA metabolism. Thereby, it plays an essential role both in DNA replication and the cellular response to DNA damage. In the cellular response to DNA damage, the RPA complex controls DNA repair and DNA damage checkpoint activation. RPA3 is required for the recruitment of the DNA double-strand break repair factors RAD51 and RAD52 to chromatin, in response to DNA damage. RPA3 also plays a role in base excision repair (BER), probably through interaction with UNG.

### **Other Names:**

Replication protein A 14 kDa subunit, RP-A p14, Replication factor A protein 3, RF-A protein 3, REPA3, RPA14

### **Source and Purity:**

Rabbit polyclonal antibodies were produced by immunizing animals with a GST-fusion protein containing the middle region of human RPA3. Antibodies were purified by affinity purification using immunogen.

### **Storage Buffer and Condition:**

Supplied in 1 x PBS (pH 7.4), 100 ug/ml BSA, 40% Glycerol, 0.01% NaN<sub>3</sub>. Store at -20 °C. Stable for 6 months from date of receipt.

### **Species Specificity:**

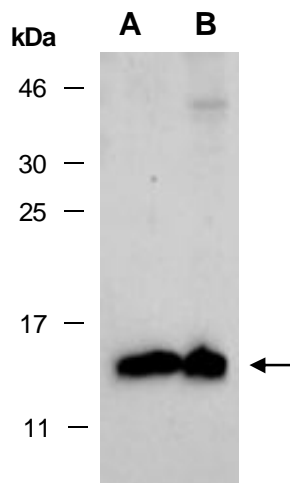
Human, Mouse

### **Tested Applications:**

WB: 1:500-1:2,000 (detect endogenous protein\*)

\*: The apparent protein size on WB may be different from the calculated M.W. due to modifications.

**Product Data:**



**Fig 1.** Western blot of total protein extracts from A) mouse thymus, B) human HeLa; using anti-RPA3 (M) (R1601-1) at RT for 2 h.