



Order: (888)-282-5810 (Phone)
(818)-707-0392 (Fax)
order@abiocode.com
Web: www.Abiocode.com

PHYB (M) Antibody, Rabbit Polyclonal

Cat#: R1244-1

Quantity: 100 ul

Predicted I Observed M.W.: 129 kDa

Lot#: Refer to vial

Application: WB

Uniprot ID: P14713

Background:

Phytochrome B (PHYB) is a regulatory photoreceptor, which exists in two forms that are reversibly interconvertible by light: the Pr form that absorbs maximally in the red region of the spectrum and the Pfr form that absorbs maximally in the far-red region. Photoconversion of Pr to Pfr induces an array of morphogenetic responses, whereas reconversion of Pfr to Pr cancels the induction of those responses. Pfr controls the expression of a number of nuclear genes including those encoding the small subunit of ribulose-bisphosphate carboxylase, chlorophyll A/B binding protein, protochlorophyllide reductase, rRNA, etc. It also controls the expression of its own gene(s) in a negative feedback fashion. PHYA is involved in the flowering time regulation.

Other Names:

Phytochrome B, HY3

Source and Purity:

Rabbit polyclonal antibodies were produced by immunizing animals with a GST-fusion protein containing the middle region of *arabidopsis thaliana* PHYB (At2g18790). Antibodies were purified by affinity purification using immunogen.

Storage Buffer and Condition:

Supplied in 1 x PBS (pH 7.4), 100 ug/ml BSA, 40% Glycerol, 0.01% NaN₃. Store at -20 °C. Stable for 6 months from date of receipt.

Species Specificity:

Arabidopsis thaliana

Tested Applications:

WB: 1:500-1:2,000 (detect endogenous protein*)

*: The apparent protein size on WB may be different from the calculated M.W. due to modifications.

Product Data:

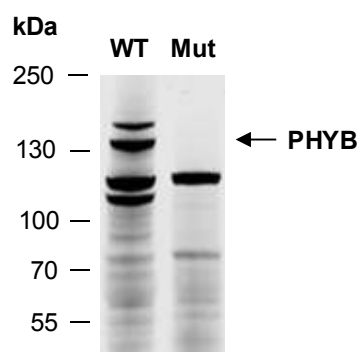


Fig 1. Western blot analysis of 100 ug of total protein extracts from 4 d-old, dark-grown WT or phyB-5 null mutant (Mut) arabidopsis seedlings, using anti-PHYB (M) (R1244-1) at 1:1000 dilution at 4°C overnight (data provided by W. Hu, UC Davis).