



Order: (888)-282-5810 (Phone)  
(818)-707-0392 (Fax)  
[order@abiocode.com](mailto:order@abiocode.com)  
Web: [www.Abiocode.com](http://www.Abiocode.com)

---

## **SDHC (C) Antibody, Rabbit Polyclonal**

**Cat#: R2433-2**

**Quantity: 100 ul**

**Predicted | Observed M.W.: 19 kDa**

**Lot#: Refer to vial**

**Application: WB**

**Uniprot ID: Q99643**

### **Background:**

Succinate dehydrogenase complex subunit C (SDHC) is the membrane-anchoring subunit of succinate dehydrogenase (SDH) that is involved in complex II of the mitochondrial electron transport chain and is responsible for transferring electrons from succinate to ubiquinone (coenzyme Q).

### **Other Names:**

Succinate dehydrogenase cytochrome b560 subunit, mitochondrial, Integral membrane protein CII-3 QPs-1, QPs1, Succinate dehydrogenase complex subunit C, Succinate-ubiquinone oxidoreductase cytochrome B large subunit, CYBL, CYB560, SDH3

### **Source and Purity:**

Rabbit polyclonal antibodies were produced by immunizing animals with a GST-fusion protein containing the C-terminal region of human SDHC. Antibodies were purified by affinity purification using immunogen.

### **Storage Buffer and Condition:**

Supplied in 1 x PBS (pH 7.4), 100 ug/ml BSA, 40% Glycerol, 0.01% NaN<sub>3</sub>. Store at -20 °C. Stable for 6 months from date of receipt.

### **Species Specificity:**

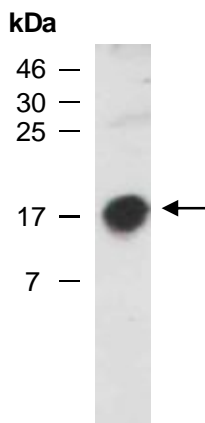
Human, Mouse

### **Tested Applications:**

WB: 1:500-1:2,000 (detect endogenous protein\*)

\*: The apparent protein size on WB may be different from the calculated M.W. due to modifications.

**Product Data:**



**Fig 1.** Western blot of total cell extracts from mouse thymus; using anti-SDHC (C) (R2433-2) at RT for 2 h.