



Order: (888)-282-5810 (Phone)
(818)-707-0392 (Fax)
order@abiocode.com
Web: www.Abiocode.com

SCARB1 (C) Antibody, Rabbit Polyclonal

Cat#: R3380-2

Quantity: 100 ul

Predicted | Observed M.W.: 61 kDa

Lot#: Refer to vial

Application: WB

Uniprot ID: Q8WTV0

Background:

Scavenger receptor class B member 1 (SCARB1) is a receptor for different ligands such as phospholipids, cholesterol ester, lipoproteins, phosphatidylserine and apoptotic cells. SCARB1 is also a probable receptor for HDL, located in particular region of the plasma membrane called caveolae. SCARB1 facilitates the flux of free and esterified cholesterol between the cell surface and extracellular donors and acceptors, such as HDL and to a lesser extent, apoB-containing lipoproteins and modified lipoproteins. SCARB1 is probably involved in the phagocytosis of apoptotic cells, via its phosphatidylserine binding activity. SCARB1 is also a receptor for hepatitis C virus glycoprotein E2. Binding between SCARB1 and E2 was found to be independent of the genotype of the viral isolate.

Other Names:

Scavenger receptor class B member 1, SRB1, CD36 and LIMPII analogous 1, CLA-1, CD36 antigen-like 1, Collagen type I receptor, thrombospondin receptor-like 1, SR-BI, CD36, CD36L1, CLA1

Source and Purity:

Rabbit polyclonal antibodies were produced by immunizing animals with a GST-fusion protein containing the C-terminal region of human SCARB1. Antibodies were purified by affinity purification using immunogen.

Storage Buffer and Condition:

Supplied in 1 x PBS (pH 7.4), 100 ug/ml BSA, 40% Glycerol, 0.01% NaN₃. Store at -20 °C. Stable for 6 months from date of receipt.

Species Specificity:

Human, Mouse

Tested Applications:

WB: 1:500-1:2,000 (detect endogenous protein*)

*: The apparent protein size on WB may be different from the calculated M.W. due to modifications.

Product Data:

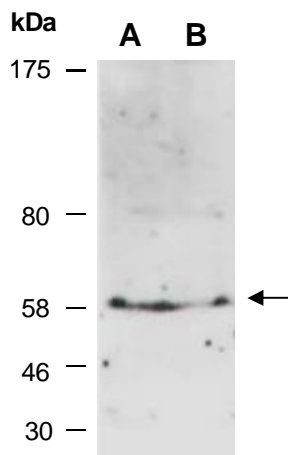


Fig 1. Western blot analysis of total cell extracts from A) mouse thymus; B) human HeLa; using anti-SCARB1 (C) (R3380-2) at RT for 2 h.