



Order: (888)-282-5810 (Phone)
(818)-707-0392 (Fax)
order@abiocode.com
Web: www.Abiocode.com

NPM1 (N) Antibody, Rabbit Polyclonal

Cat#: R3532-1

Quantity: 100 ul

Predicted | Observed M.W.: 33 kDa

Lot#: Refer to vial

Application: WB

Uniprot ID: P06748

Background:

Nucleophosmin (NPM1) belongs to the nucleoplasmin family and is involved in diverse cellular processes such as ribosome biogenesis, centrosome duplication, protein chaperoning, histone assembly, cell proliferation, and regulation of tumor suppressors p53/TP53 and ARF. NPM1 binds ribosome presumably to drive ribosome nuclear export.

Other Names:

Nucleophosmin, Nucleolar phosphoprotein B23, Nucleolar protein NO38, Numatrin, NPM

Source and Purity:

Rabbit polyclonal antibodies were produced by immunizing animals with a GST-fusion protein containing the N-terminal region of human NPM1. Antibodies were purified by affinity purification using immunogen.

Storage Buffer and Condition:

Supplied in 1 x PBS (pH 7.4), 100 ug/ml BSA, 40% Glycerol, 0.01% NaN₃. Store at -20 °C. Stable for 6 months from date of receipt.

Species Specificity:

Human, Mouse

Tested Applications:

WB: 1:1,000-1:3,000 (detect endogenous protein*)

*: The apparent protein size on WB may be different from the calculated M.W. due to modifications.

Product Data:

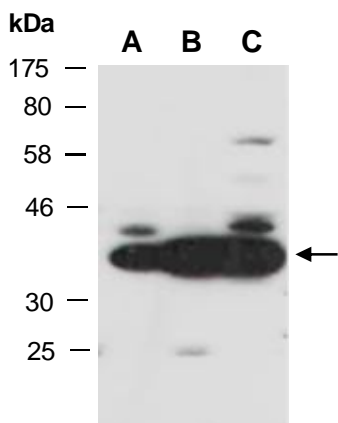


Fig 1. Western blot of total cell extracts from A) mouse thymus, B) human HeLa, C) human Jurkat; using anti-NPM1 (N) (R3532-1) at RT for 2 h.