



Order: (888)-282-5810 (Phone)  
(818)-707-0392 (Fax)  
[order@abiocode.com](mailto:order@abiocode.com)  
Web: [www.Abiocode.com](http://www.Abiocode.com)

---

## PPP3CB (N) Antibody, Rabbit Polyclonal

**Cat#:** R3531-1

**Quantity:** 100 ul

**Predicted | Observed M.W.:** 59 kDa

**Lot#:** Refer to vial

**Application:** WB

**Uniprot ID:** P16298

### **Background:**

Serine/threonine-protein phosphatase 2B catalytic subunit beta isoform (PPP3CB) belongs to the PPP phosphatase family and the PP-2B subfamily. PPP3CB is a calcium-dependent, calmodulin-stimulated protein phosphatase. This subunit may have a role in the calmodulin activation of calcineurin.

### **Other Names:**

Serine/threonine-protein phosphatase 2B catalytic subunit beta isoform, CAM-PRP catalytic subunit, Calmodulin-dependent calcineurin A subunit beta isoform, CALNA2, CNA2, CALNB

### **Source and Purity:**

Rabbit polyclonal antibodies were produced by immunizing animals with a GST-fusion protein containing the N-terminal region of human PPP3CB. Antibodies were purified by affinity purification using immunogen.

### **Storage Buffer and Condition:**

Supplied in 1 x PBS (pH 7.4), 100 ug/ml BSA, 40% Glycerol, 0.01% NaN<sub>3</sub>. Store at -20 °C. Stable for 6 months from date of receipt.

### **Species Specificity:**

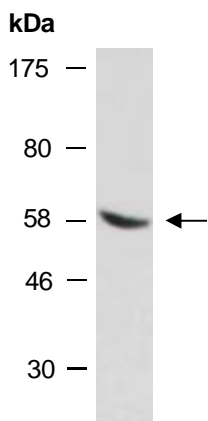
Human, Mouse

### **Tested Applications:**

WB: 1:1,000-1:3,000 (detect endogenous protein\*)

\*: The apparent protein size on WB may be different from the calculated M.W. due to modifications.

**Product Data:**



**Fig 1.** Western blot of total cell extracts from mouse brain; using anti-PPP3CB (N) (R3531-1) at RT for 2 h.