



Order: (888)-282-5810 (Phone)
(818)-707-0392 (Fax)
order@abiocode.com
Web: www.Abiocode.com

DOCK2 (C) Antibody, Rabbit Polyclonal

Cat#: R1829-2

Quantity: 100 ul

Predicted | Observed M.W.: 212 kDa

Lot#: Refer to vial

Application: WB

Uniprot ID: Q92608

Background:

Dedicator of cytokinesis protein 2 (DOCK2) is a peripheral membrane protein belonging to the DOCK family. DOCK2 is involved in cytoskeletal rearrangements required for lymphocyte migration in response of chemokines. DOCK2 activates RAC1 and RAC2, but not CDC42, by functioning as a guanine nucleotide exchange factor (GEF), which exchanges bound GDP for free GTP. Furthermore, DOCK2 may also participate in IL2 transcriptional activation via the activation of RAC2.

Other Names:

Dedicator of cytokinesis protein 2, KIAA0209

Source and Purity:

Rabbit polyclonal antibodies were produced by immunizing animals with a GST-fusion protein containing the C-terminal region of human DOCK2. Antibodies were purified by affinity purification using immunogen.

Storage Buffer and Condition:

Supplied in 1 x PBS (pH 7.4), 100 ug/ml BSA, 40% Glycerol, 0.01% NaN₃. Store at -20 °C. Stable for 6 months from date of receipt.

Species Specificity:

Human, Mouse

Tested Applications:

WB: 1:1,000-1:3,000 (detect endogenous protein*)

*: The apparent protein size on WB may be different from the calculated M.W. due to modifications.

Product Data:

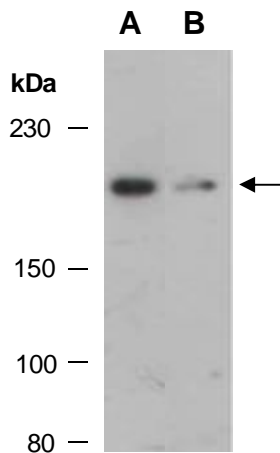


Fig 1. Western blot of total cell extracts from A) mouse thymus, B) human Jurkat; using anti-DOCK2 (C) (R1829-2) at RT for 2 h.