



Order: (888)-282-5810 (Phone)  
(818)-707-0392 (Fax)  
[order@abiocode.com](mailto:order@abiocode.com)  
Web: [www.Abiocode.com](http://www.Abiocode.com)

---

## **ROCK1 (C) Antibody, Rabbit Polyclonal**

**Cat#: R1667-2**

**Quantity: 100 ul**

**Predicted | Observed M.W.: 158 kDa**

**Lot#: Refer to vial**

**Application: WB**

**Uniprot ID: Q13464**

### **Background:**

Rho-associated protein kinase 1 (ROCK1) is a peripheral membrane protein belonging to the protein kinase superfamily and the AGC Ser/Thr protein kinase family. ROCK1 is a protein kinase which is a key regulator of actin cytoskeleton and cell polarity. ROCK1 is involved in regulation of smooth muscle contraction, actin cytoskeleton organization, stress fiber and focal adhesion formation, neurite retraction, cell adhesion and motility via phosphorylation of DAPK3, GFAP, LIMK1, LIMK2, MYL9/MLC2, PFN1 and PPP1R12A.

### **Other Names:**

Rho-associated protein kinase 1 Renal carcinoma antigen NY-REN-35, Rho-associated, coiled-coil-containing protein kinase 1, Rho-associated, coiled-coil-containing protein kinase I, ROCK-I, p160 ROCK-1, p160ROCK

### **Source and Purity:**

Rabbit polyclonal antibodies were produced by immunizing animals with a GST-fusion protein containing the C-terminal region of human ROCK1. Antibodies were purified by affinity purification using immunogen.

### **Storage Buffer and Condition:**

Supplied in 1 x PBS (pH 7.4), 100 ug/ml BSA, 40% Glycerol, 0.01% NaN<sub>3</sub>. Store at -20 °C. Stable for 6 months from date of receipt.

### **Species Specificity:**

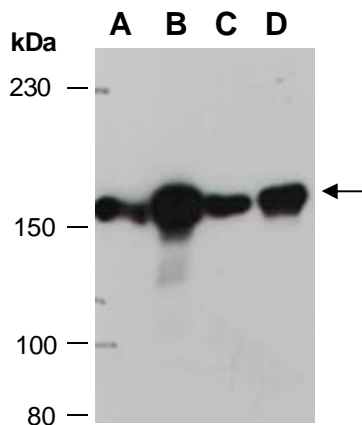
Human, Mouse

### **Tested Applications:**

WB: 1:1,000-1:3,000 (detect endogenous protein\*)

\*: The apparent protein size on WB may be different from the calculated M.W. due to modifications.

**Product Data:**



**Fig 1.** Western blot of total cell extracts from A) mouse brain, B) mouse thymus, C) human HeLa, D) human Jurkat; using anti-ROCK1 (C) (R1667-2) at RT for 2 h.