



Order: (888)-282-5810 (Phone)  
(818)-707-0392 (Fax)  
[order@abiocode.com](mailto:order@abiocode.com)  
Web: [www.Abiocode.com](http://www.Abiocode.com)

---

## **CRK (C) Antibody, Rabbit Polyclonal**

**Cat#: R1476-2**

**Quantity: 100 ul**

**Predicted | Observed M.W.: 34 kDa**

**Lot#: Refer to vial**

**Application: WB**

**Uniprot ID: P46108**

### **Background:**

Adapter molecule crk belongs to the CRK family. The Crk-I and Crk-II forms differ in their biological activities. Crk-II has less transforming activity than Crk-I. Crk-II mediates attachment-induced MAPK8 activation, membrane ruffling and cell motility in a Rac-dependent manner. CRK is involved in phagocytosis of apoptotic cells and cell motility via its interaction with DOCK1 and DOCK4. CRK may also regulate the EFNA5-EPHA3 signaling.

### **Other Names:**

Adapter molecule crk, Proto-oncogene c-Crk, p38

### **Source and Purity:**

Rabbit polyclonal antibodies were produced by immunizing animals with a GST-fusion protein containing the C-terminal region of human CRK. Antibodies were purified by affinity purification using immunogen.

### **Storage Buffer and Condition:**

Supplied in 1 x PBS (pH 7.4), 100 ug/ml BSA, 40% Glycerol, 0.01% NaN<sub>3</sub>. Store at -20 °C. Stable for 6 months from date of receipt.

### **Species Specificity:**

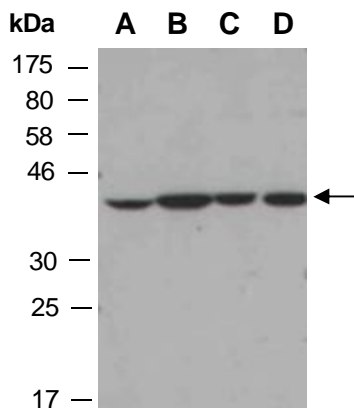
Human, Mouse

### **Tested Applications:**

WB: 1:1,000-1:3,000 (detect endogenous protein\*)

\*: The apparent protein size on WB may be different from the calculated M.W. due to modifications.

**Product Data:**



**Fig 1.** Western blot of total cell extracts from A) mouse brain, B) mouse thymus, C) human HeLa, D) human Jurkat; using anti-CRK (C) (R1476-2) at RT for 2 h.