



Order: (888)-282-5810 (Phone)  
(818)-707-0392 (Fax)  
[order@abiocode.com](mailto:order@abiocode.com)  
Web: [www.Abiocode.com](http://www.Abiocode.com)

---

## **CREB1 (C) Antibody, Rabbit Polyclonal**

**Cat#:** R2933-2

**Quantity:** 100 ul

**Predicted | Observed M.W.:** 37 kDa

**Lot#:** Refer to vial

**Application:** WB

**Uniprot ID:** P16220

### **Background:**

Cyclic AMP-responsive element-binding protein 1 (CREB1) is a phosphorylation-dependent transcription factor belonging to the bZIP family that stimulates transcription upon binding to the DNA cAMP response element (CRE), a sequence present in many viral and cellular promoters. Transcription activation is enhanced by the TORC coactivators which act independently of Ser-133 phosphorylation. CREB1 is involved in different cellular processes including the synchronization of circadian rhythmicity and the differentiation of adipose cells.

### **Other Names:**

Cyclic AMP-responsive element-binding protein 1, CREB-1, cAMP-responsive element-binding protein 1

### **Source and Purity:**

Rabbit polyclonal antibodies were produced by immunizing animals with a GST-fusion protein containing the C-terminal region of human CREB1. Antibodies were purified by affinity purification using immunogen.

### **Storage Buffer and Condition:**

Supplied in 1 x PBS (pH 7.4), 100 ug/ml BSA, 40% Glycerol, 0.01% NaN<sub>3</sub>. Store at -20 °C. Stable for 6 months from date of receipt.

### **Species Specificity:**

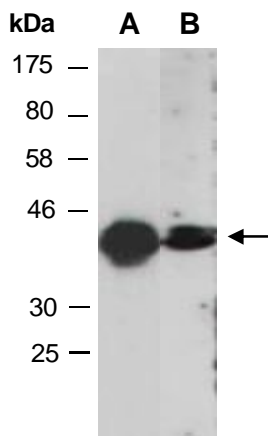
Human, Mouse

### **Tested Applications:**

WB: 1:1,000-1:3,000 (detect endogenous protein\*)

\*: The apparent protein size on WB may be different from the calculated M.W. due to modifications.

**Product Data:**



**Fig 1.** Western blot of total cell extracts from A) mouse thymus, B) human Jurkat; using anti-CREB1 (C) (R2933-2) at RT for 2 h.