



Order: (888)-282-5810 (Phone)
(818)-707-0392 (Fax)
order@abiocode.com
Web: www.Abiocode.com

CUX1 (C) Antibody, Rabbit Polyclonal

Cat#: R2891-2

Quantity: 100 ul

Predicted | Observed M.W.: 164 | 200 kDa

Lot#: Refer to vial

Application: WB

Uniprot ID: P39880

Background:

Homeobox protein cut-like 1 (CUX1) belongs to the CUT homeobox family and probably has a broad role in mammalian development as a repressor of developmentally regulated gene expression. CUX1 may act by preventing binding of positively-activating CCAAT factors to promoters. CUX1 is a component of nf-munr repressor; binds to the matrix attachment regions (MARs) (5' and 3') of the immunoglobulin heavy chain enhancer.

Other Names:

Homeobox protein cut-like 1, CCAAT displacement protein, CDP, Homeobox protein cux-1, CUTL1

Source and Purity:

Rabbit polyclonal antibodies were produced by immunizing animals with a GST-fusion protein containing the C-terminal region of human CUX1. Antibodies were purified by affinity purification using immunogen.

Storage Buffer and Condition:

Supplied in 1 x PBS (pH 7.4), 100 ug/ml BSA, 40% Glycerol, 0.01% NaN₃. Store at -20 °C. Stable for 6 months from date of receipt.

Species Specificity:

Human, Mouse

Tested Applications:

WB: 1:1,000-1:3,000 (detect endogenous protein*)

*: The apparent protein size on WB may be different from the calculated M.W. due to modifications.

Product Data:

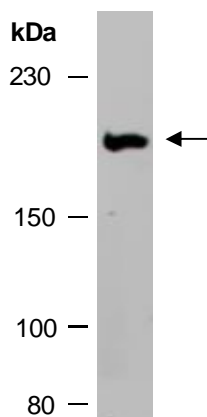


Fig 1. Western blot of total cell extracts from mouse thymus; using anti-CUX1 (C) (R2891-2) at RT for 2 h.