



Order: (888)-282-5810 (Phone)
(818)-707-0392 (Fax)
order@abiocode.com
Web: www.Abiocode.com

BUB1B (N) Antibody, Rabbit Polyclonal

Cat#: R2573-1

Quantity: 100 ul

Predicted | Observed M.W.: 120 kDa

Lot#: Refer to vial

Application: WB

Uniprot ID: O60566

Background:

Mitotic checkpoint serine/threonine-protein kinase BUB1 beta (BUB1B) belongs to the protein kinase superfamily, the Ser/Thr protein kinase family, and the BUB1 subfamily. BUB1B is an essential component of the mitotic checkpoint. BUB1B is required for normal mitosis progression. The mitotic checkpoint delays anaphase until all chromosomes are properly attached to the mitotic spindle. One of its checkpoint functions is to inhibit the activity of the anaphase-promoting complex/cyclosome (APC/C) by blocking the binding of CDC20 to APC/C, independently of its kinase activity.

Other Names:

Mitotic checkpoint serine/threonine-protein kinase BUB1 beta MAD3/BUB1-related protein kinase, hBUBR1, Mitotic checkpoint kinase MAD3L, Protein SSK1, BUBR1, MAD3L, SSK1

Source and Purity:

Rabbit polyclonal antibodies were produced by immunizing animals with a GST-fusion protein containing the N-terminal region of human BUB1B. Antibodies were purified by affinity purification using immunogen.

Storage Buffer and Condition:

Supplied in 1 x PBS (pH 7.4), 100 ug/ml BSA, 40% Glycerol, 0.01% NaN₃. Store at -20 °C. Stable for 6 months from date of receipt.

Species Specificity:

Human, Mouse

Tested Applications:

WB: 1:1,000-1:3,000 (detect endogenous protein*)

*: The apparent protein size on WB may be different from the calculated M.W. due to modifications.

Product Data:

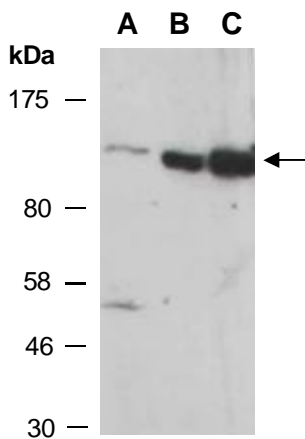


Fig 1. Western blot of total cell extracts from A) mouse thymus, B) human HeLa, C) human Jurkat; using anti-BUB1B (N) (R2573-1) at RT for 2 h.