



Order: (888)-282-5810 (Phone)
(818)-707-0392 (Fax)
order@abiocode.com
Web: www.Abiocode.com

SYMPK (C) Antibody, Rabbit Polyclonal

Cat#: R1687-2

Quantity: 100 ul

Predicted | Observed M.W.: 141 kDa

Lot#: Refer to vial

Application: WB

Uniprot ID: Q92797

Background:

Symplekin (SYMPK) is a peripheral membrane protein belonging to the Symplekin family. SYMPK is a scaffold protein that functions as a component of a multimolecular complex involved in histone mRNA 3'-end processing. SYMPK is a specific component of the tight junction (TJ) plaque, but might not be an exclusively junctional component. Additionally, SYMPK is involved in pre-mRNA polyadenylation and enhances SSU72 phosphatase activity as well.

Other Names:

Symplekin, SPK

Source and Purity:

Rabbit polyclonal antibodies were produced by immunizing animals with a GST-fusion protein containing the C-terminal region of human SYMPK. Antibodies were purified by affinity purification using immunogen.

Storage Buffer and Condition:

Supplied in 1 x PBS (pH 7.4), 100 ug/ml BSA, 40% Glycerol, 0.01% NaN₃. Store at -20 °C. Stable for 6 months from date of receipt.

Species Specificity:

Human, Mouse

Tested Applications:

WB: 1:1,000-1:3,000 (detect endogenous protein*)

*: The apparent protein size on WB may be different from the calculated M.W. due to modifications.

Product Data:

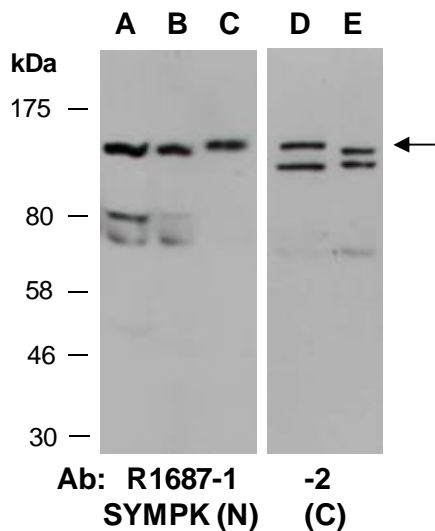


Fig 1. Western blot of total cell extracts from A, D) mouse thymus, B, E) human HeLa, C) human Jurkat; using 2 independent Abs against 2 distinct regions of human SYMPK at RT for 2 h.