



Order: (888)-282-5810 (Phone)
(818)-707-0392 (Fax)
order@abiocode.com
Web: www.Abiocode.com

BCL2L1 (N) Antibody, Rabbit Polyclonal

Cat#: R2352-1

Quantity: 100 ul

Predicted | Observed M.W.: 26 kDa

Lot#: Refer to vial

Application: WB

Uniprot ID: Q07817

Background:

Bcl-2-like protein 1 (BCL2L1) belongs to the Bcl-2 family. BCL2L1 is a potent inhibitor of cell death and appears to regulate cell death by blocking the voltage-dependent anion channel (VDAC) by binding to it and preventing the release of the caspase activator, CYC1, from the mitochondrial membrane. BCL2L1 also acts as a regulator of G2 checkpoint and progression to cytokinesis during mitosis.

Other Names:

Bcl-2-like protein 1, Apoptosis regulator Bcl-X, Bcl2-L-1, BCL2L, BCLX

Source and Purity:

Rabbit polyclonal antibodies were produced by immunizing animals with a GST-fusion protein containing the N-terminal region of human BCL2L1. Antibodies were purified by affinity purification using immunogen.

Storage Buffer and Condition:

Supplied in 1 x PBS (pH 7.4), 100 ug/ml BSA, 40% Glycerol, 0.01% NaN₃. Store at -20 °C. Stable for 6 months from date of receipt.

Species Specificity:

Human, Mouse

Tested Applications:

WB: 1:1,000-1:3,000 (detect endogenous protein*)

*: The apparent protein size on WB may be different from the calculated M.W. due to modifications.

Product Data:

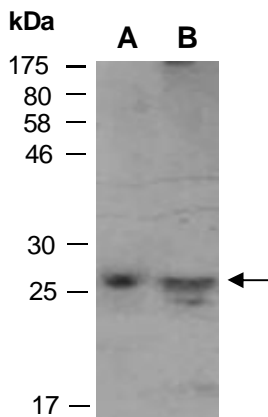


Fig 1. Western blot of total cell extracts from A) mouse brain, B) mouse thymus; using anti-BCL2L1 (N) (R2352-1) at RT for 2 h.