



Order: (888)-282-5810 (Phone)
(818)-707-0392 (Fax)
order@abiocode.com
Web: www.Abiocode.com

SLC12A2 (N) Antibody, Rabbit Polyclonal

Cat#: R2208-1

Quantity: 100 ul

Predicted | Observed M.W.: 131 | 200 kDa

Lot#: Refer to vial

Application: WB

Uniprot ID: P55011

Background:

Solute carrier family 12 member 2 (SLC12A2) is a multi-pass membrane protein belonging to the SLC12A transporter family. SLC12A2 is an electrically silent transporter system. SLC12A2 mediates sodium and chloride reabsorption. Additionally, SLC12A2 plays a vital role in the regulation of ionic balance and cell volume.

Other Names:

Solute carrier family 12 member 2, Basolateral Na-K-Cl symporter, Bumetanide-sensitive sodium-(potassium)-chloride cotransporter 1, NKCC1

Source and Purity:

Rabbit polyclonal antibodies were produced by immunizing animals with a GST-fusion protein containing the N-terminal region of human SLC12A2. Antibodies were purified by affinity purification using immunogen.

Storage Buffer and Condition:

Supplied in 1 x PBS (pH 7.4), 100 ug/ml BSA, 40% Glycerol, 0.01% NaN₃. Store at -20 °C. Stable for 6 months from date of receipt.

Species Specificity:

Human, Mouse

Tested Applications:

WB: 1:1,000-1:3,000 (detect endogenous protein*)

*: The apparent protein size on WB may be different from the calculated M.W. due to modifications.

Product Data:

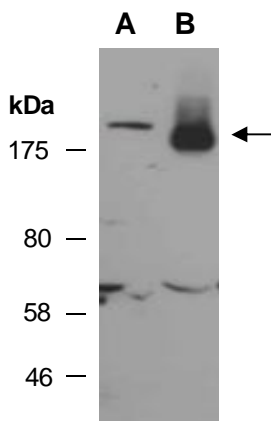


Fig 1. Western blot of total cell extracts from A) mouse thymus, B) human HeLa; using anti-SLC12A2 (N) (R2208-1) at RT for 2 h.