



Order: (888)-282-5810 (Phone)  
(818)-707-0392 (Fax)  
[order@abiocode.com](mailto:order@abiocode.com)  
Web: [www.Abiocode.com](http://www.Abiocode.com)

---

## LIN7A (C) Antibody, Rabbit Polyclonal

**Cat#:** R1894-2

**Quantity:** 100 ul

**Predicted | Observed M.W.:** 26 kDa

**Lot#:** Refer to vial

**Application:** WB

**Uniprot ID:** O14910

### Background:

Protein lin-7 homolog A (LIN7A) is a peripheral membrane protein belonging to the lin-7 family. LIN7A plays a role in establishing and maintaining the asymmetric distribution of channels and receptors at the plasma membrane of polarized cells. LIN7A forms membrane-associated multiprotein complexes that may regulate delivery and recycling of proteins to the correct membrane domains.

### Other Names:

Protein lin-7 homolog A, Lin-7A, hLin-7, Mammalian lin-seven protein 1, MALS-1, Tax interaction protein 33, TIP-33, Vertebrate lin-7 homolog 1, Veli-1, MALS1, VELI1

### Source and Purity:

Rabbit polyclonal antibodies were produced by immunizing animals with a GST-fusion protein containing the C-terminal region of human LIN7A. Antibodies were purified by affinity purification using immunogen.

### Storage Buffer and Condition:

Supplied in 1 x PBS (pH 7.4), 100 ug/ml BSA, 40% Glycerol, 0.01% NaN<sub>3</sub>. Store at -20 °C. Stable for 6 months from date of receipt.

### Species Specificity:

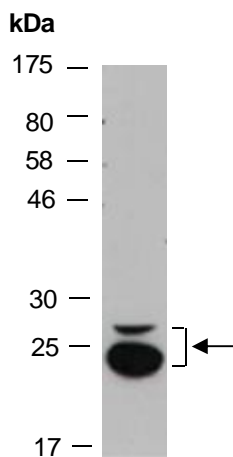
Human, Mouse

### Tested Applications:

WB: 1:1,000-1:3,000 (detect endogenous protein\*)

\*: The apparent protein size on WB may be different from the calculated M.W. due to modifications.

**Product Data:**



**Fig 1.** Western blot of total cell extracts from mouse brain; using anti-LIN7A (C) (R1894-2) at RT for 2 h.