



Order: (888)-282-5810 (Phone)
(818)-707-0392 (Fax)
order@abiocode.com
Web: www.Abiocode.com

RPH3A (N) Antibody, Rabbit Polyclonal

Cat#: R3046-1

Quantity: 100 ul

Predicted | Observed M.W.: 77 kDa

Lot#: Refer to vial

Application: WB

Uniprot ID: P47708

Background:

Rabphilin-3A (RPH3A) is a protein transport probably involved with Ras-related protein Rab-3A in synaptic vesicle traffic and/or synaptic vesicle fusion. RPH3A could also play a role in neurotransmitter release by regulating membrane flow in the nerve terminal.

Other Names:

Rabphilin-3A, Exophilin-1

Source and Purity:

Rabbit polyclonal antibodies were produced by immunizing animals with a GST-fusion protein containing the N-terminal region of mouse RPH3A. Antibodies were purified by affinity purification using immunogen.

Storage Buffer and Condition:

Supplied in 1 x PBS (pH 7.4), 100 ug/ml BSA, 40% Glycerol, 0.01% NaN₃. Store at -20 °C. Stable for 6 months from date of receipt.

Species Specificity:

Mouse

Tested Applications:

WB: 1:1,000-1:3,000 (detect endogenous protein*)

*: The apparent protein size on WB may be different from the calculated M.W. due to modifications.

Product Data:

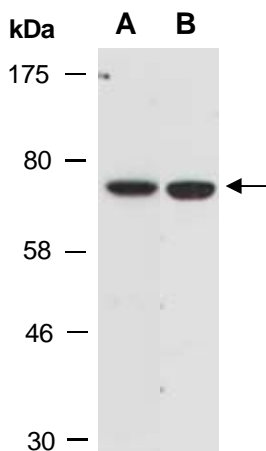


Fig 1. Western blot of total cell extracts from mouse brain; using A) anti-RPH3A (N) (R3046-1); B) anti-RPH3A (M) (R3046-3) at RT for 2 h.