



Order: (888)-282-5810 (Phone)
(818)-707-0392 (Fax)
order@abiocode.com
Web: www.Abiocode.com

CAPRIN2 (C2) Antibody, Rabbit Polyclonal

Cat#: R3045-3

Quantity: 100 ul

Predicted | Observed M.W.: 114 kDa

Lot#: Refer to vial

Application: WB

Uniprot ID: Q05A80

Background:

Caprin-2 (CAPRIN2) belongs to the caprin family and may regulate the transport and translation of mRNAs, modulating for instance the expression of proteins involved in synaptic plasticity in neurons. CAPRIN2 is involved in regulation of growth as erythroblasts shift from a highly proliferative state towards their terminal phase of differentiation. CAPRIN2 may also be involved in apoptosis.

Other Names:

Caprin-2, C1q domain-containing protein 1, Cytoplasmic activation/proliferation-associated protein 2, RNA granule protein 140, C1qdc1, Kiaa1873, Rng140

Source and Purity:

Rabbit polyclonal antibodies were produced by immunizing animals with a GST-fusion protein containing the C-terminal region of mouse CAPRIN2. Antibodies were purified by affinity purification using immunogen.

Storage Buffer and Condition:

Supplied in 1 x PBS (pH 7.4), 100 ug/ml BSA, 40% Glycerol, 0.01% NaN₃. Store at -20 °C. Stable for 6 months from date of receipt.

Species Specificity:

Human, Mouse

Tested Applications:

WB: 1:1,000-1:3,000 (detect endogenous protein*)

*: The apparent protein size on WB may be different from the calculated M.W. due to modifications.

Product Data:

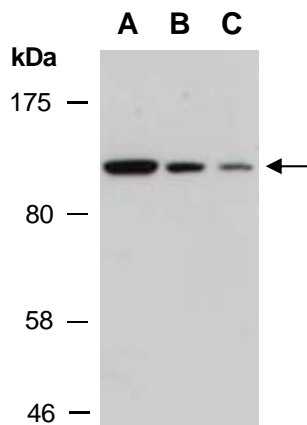


Fig 1. Western blot of total cell extracts from A) mouse thymus, B) human HeLa, C) human Jurkat; using anti-CAPRIN2 (C2) (R3045-3) at RT for 2 h.