



Order: (888)-282-5810 (Phone)
(818)-707-0392 (Fax)
order@abiocode.com
Web: www.Abiocode.com

NARFL (C) Antibody, Rabbit Polyclonal

Cat#: R2865-2

Quantity: 100 ul

Predicted | Observed M.W.: 53 | 60 kDa

Lot#: Refer to vial

Application: WB

Uniprot ID: Q9H6Q4

Background:

Cytosolic Fe-S cluster assembly factor NARFL belongs to the NARF family and is a component of the cytosolic iron-sulfur protein assembly (CIA) complex, a multiprotein complex that mediates the incorporation of iron-sulfur cluster into extramitochondrial Fe/S proteins. NARFL seems to negatively regulate the level of HIF1A expression, although this effect could be indirect.

Other Names:

Cytosolic Fe-S cluster assembly factor NARFL, Iron-only hydrogenase-like protein 1, IOP1, Nuclear prelamin A recognition factor-like protein, Protein related to Narf, PRN

Source and Purity:

Rabbit polyclonal antibodies were produced by immunizing animals with a GST-fusion protein containing the C-terminal region of human NARFL. Antibodies were purified by affinity purification using immunogen.

Storage Buffer and Condition:

Supplied in 1 x PBS (pH 7.4), 100 ug/ml BSA, 40% Glycerol, 0.01% NaN₃. Store at -20 °C. Stable for 6 months from date of receipt.

Species Specificity:

Human, Mouse

Tested Applications:

WB: 1:1,000-1:3,000 (detect endogenous protein*)

*: The apparent protein size on WB may be different from the calculated M.W. due to modifications.

Product Data:

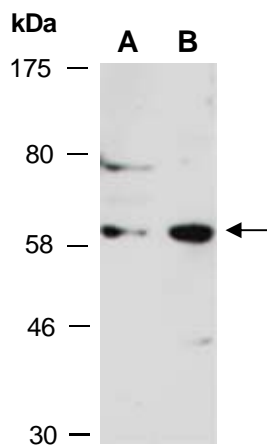


Fig 1. Western blot of total cell extracts from A) mouse thymus, B) human Jurkat; using anti-NARFL (C) (R2865-2) at RT for 2 h.