



Order: (888)-282-5810 (Phone)
(818)-707-0392 (Fax)
order@abiocode.com
Web: www.Abiocode.com

MITF (N) Antibody, Rabbit Polyclonal

Cat#: R2801-1

Quantity: 100 ul

Predicted | Observed M.W.: 59 kDa

Lot#: Refer to vial

Application: WB

Uniprot ID: O75030

Background:

Microphthalmia-associated transcription factor (MITF) belongs to the MiT/TFE family. MITF is a transcription factor that regulates the expression of genes with essential roles in cell differentiation, proliferation and survival. MITF binds to symmetrical DNA sequences (E-boxes) (5'-CACGTG-3') found in the promoters of target genes, such as BCL2 and tyrosinase (TYR).

Other Names:

Microphthalmia-associated transcription factor, Class E basic helix-loop-helix protein 32, bHLHe32, BHLHE32

Source and Purity:

Rabbit polyclonal antibodies were produced by immunizing animals with a GST-fusion protein containing the N-terminal region of human MITF. Antibodies were purified by affinity purification using immunogen.

Storage Buffer and Condition:

Supplied in 1 x PBS (pH 7.4), 100 ug/ml BSA, 40% Glycerol, 0.01% NaN₃. Store at -20 °C. Stable for 6 months from date of receipt.

Species Specificity:

Human, Mouse

Tested Applications:

WB: 1:1,000-1:3,000 (detect endogenous protein*)

*: The apparent protein size on WB may be different from the calculated M.W. due to modifications.

Product Data:

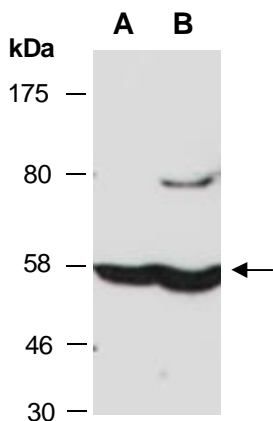


Fig 1. Western blot of total cell extracts from A) mouse brain, B) mouse thymus; using anti-MITF (N) (R2801-1) at RT for 2 h.