



Order: (888)-282-5810 (Phone)
(818)-707-0392 (Fax)
order@abiocode.com
Web: www.Abiocode.com

STK39 (C) Antibody, Rabbit Polyclonal

Cat#: R2461-2

Quantity: 100 ul

Predicted | Observed M.W.: 59 kDa

Lot#: Refer to vial

Application: WB

Uniprot ID: Q9UEW8

Background:

STE20/SPS1-related proline-alanine-rich protein kinase (STK39) belongs to the protein kinase superfamily, the STE Ser/Thr protein kinase family, and the STE20 subfamily. STK39 may act as a mediator of stress-activated signals.

Other Names:

STE20/SPS1-related proline-alanine-rich protein kinase, Ste-20-related kinase, DCHT, Serine/threonine-protein kinase 39, SPAK

Source and Purity:

Rabbit polyclonal antibodies were produced by immunizing animals with a GST-fusion protein containing the C-terminal region of human STK39. Antibodies were purified by affinity purification using immunogen.

Storage Buffer and Condition:

Supplied in 1 x PBS (pH 7.4), 100 ug/ml BSA, 40% Glycerol, 0.01% NaN₃. Store at -20 °C. Stable for 6 months from date of receipt.

Species Specificity:

Human

Tested Applications:

WB: 1:1,000-1:3,000 (detect endogenous protein*)

*: The apparent protein size on WB may be different from the calculated M.W. due to modifications.

Product Data:

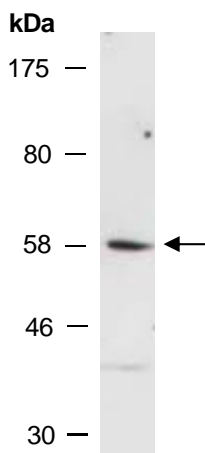


Fig 1. Western blot of total cell extracts from human Jurkat; using anti-STK39 (C) (R2461-2) at RT for 2 h.