



Order: (888)-282-5810 (Phone)
(818)-707-0392 (Fax)
order@abiocode.com
Web: www.Abiocode.com

STRADB (N) Antibody, Rabbit Polyclonal

Cat#: R3049-1

Quantity: 100 ul

Predicted | Observed M.W.: 47 | 54 kDa

Lot#: Refer to vial

Application: WB

Uniprot ID: Q9C0K7

Background:

STE20-related kinase adapter protein beta (STRADB) belongs to the protein kinase superfamily, the STE Ser/Thr protein kinase family, and the STE20 subfamily. STRADB is a pseudokinase which, in complex with CAB39/MO25 (CAB39/MO25alpha or CAB39L/MO25beta), binds to and activates STK11/LKB1. STRADB adopts a closed conformation typical of active protein kinases and binds STK11/LKB1 as a pseudosubstrate, promoting conformational change of STK11/LKB1 in an active conformation.

Other Names:

STE20-related kinase adapter protein beta, Amyotrophic lateral sclerosis 2 chromosomal region candidate gene 2 protein, CALS-21, ILP-interacting protein, Pseudokinase ALS2CR2, STRAD beta, ALS2CR2, ILPIP

Source and Purity:

Rabbit polyclonal antibodies were produced by immunizing animals with a GST-fusion protein containing the N-terminal region of human STRADB. Antibodies were purified by affinity purification using immunogen.

Storage Buffer and Condition:

Supplied in 1 x PBS (pH 7.4), 100 ug/ml BSA, 40% Glycerol, 0.01% NaN₃. Store at -20 °C. Stable for 6 months from date of receipt.

Species Specificity:

Human, Mouse

Tested Applications:

WB: 1:1,000-1:3,000 (detect endogenous protein*)

*: The apparent protein size on WB may be different from the calculated M.W. due to modifications.

Product Data:

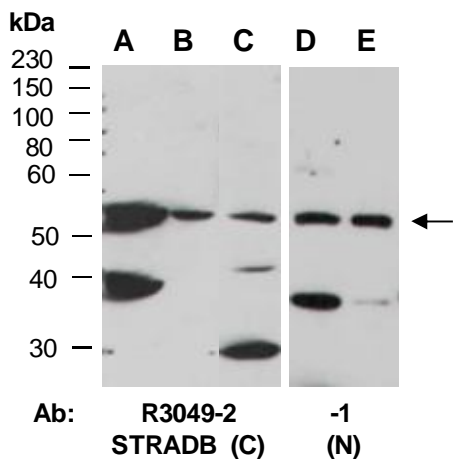


Fig 1. Western blot of total cell extracts from A, D) mouse brain, B, E) mouse thymus, C) human Jurkat; using 2 independent Abs against 2 distinct regions of human STRADB at RT for 2 h.