



Order: (888)-282-5810 (Phone)  
(818)-707-0392 (Fax)  
[order@abiocode.com](mailto:order@abiocode.com)  
Web: [www.Abiocode.com](http://www.Abiocode.com)

---

## **SUGT1 (C) Antibody, Rabbit Polyclonal**

**Cat#: R2948-2**

**Quantity: 100 ul**

**Predicted | Observed M.W.: 41 kDa**

**Lot#: Refer to vial**

**Application: WB**

**Uniprot ID: Q9Y2Z0**

### **Background:**

Suppressor of G2 allele of SKP1 homolog (SUGT1) belongs to the SUGT1 family. SUGT1 may play a role in ubiquitination and subsequent proteasomal degradation of target proteins.

### **Other Names:**

Suppressor of G2 allele of SKP1 homolog, Protein 40-6-3, Sgt1

### **Source and Purity:**

Rabbit polyclonal antibodies were produced by immunizing animals with a GST-fusion protein containing the C-terminal region of human SUGT1. Antibodies were purified by affinity purification using immunogen.

### **Storage Buffer and Condition:**

Supplied in 1 x PBS (pH 7.4), 100 ug/ml BSA, 40% Glycerol, 0.01% NaN<sub>3</sub>. Store at -20 °C. Stable for 6 months from date of receipt.

### **Species Specificity:**

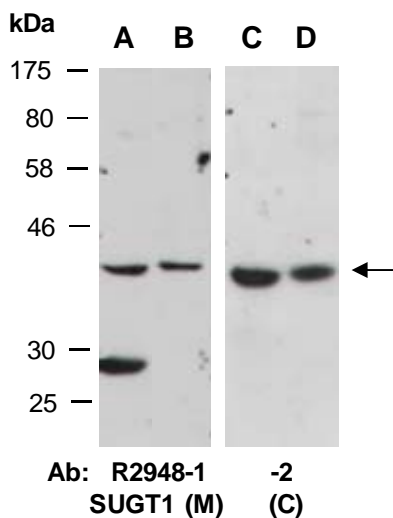
Human, Mouse

### **Tested Applications:**

WB: 1:1,000-1:3,000 (detect endogenous protein\*)

\*: The apparent protein size on WB may be different from the calculated M.W. due to modifications.

**Product Data:**



**Fig 1.** Western blot of total cell extracts from A, C) mouse brain, B) human Jurkat, D) mouse thymus; using 2 independent Abs against 2 distinct regions of human SUGT1 at RT for 2 h.