



Order: (888)-282-5810 (Phone)  
(818)-707-0392 (Fax)  
[order@abiocode.com](mailto:order@abiocode.com)  
Web: [www.Abiocode.com](http://www.Abiocode.com)

---

## SUVR2 (M) Antibody, Rabbit Polyclonal

**Cat#:** R3445-2

**Quantity:** 100 ul

**Predicted | Observed M.W.:** 79 kDa

**Lot#:** Refer to vial

**Application:** WB

**Uniprot ID:** Q9FNC7

### **Background:**

SUVR2 is one of the four closely related Arabidopsis SUVR proteins that belong to the SU(VAR)3-9 subgroup of SET-domain proteins. Proteins containing the evolutionarily conserved SET domain are involved in regulation of eukaryotic gene expression and chromatin structure through their histone lysine methyltransferase (HMTase) activity. SUVR1, SUVR2 and SUVR4 proteins contain a novel domain at their N-terminus, and a SUVR specific region preceding the SET domain. SUVR2 is localized to the nucleolus, and it maybe involved in regulation of rRNA expression.

### **Other Names:**

Histone-lysine N-methyltransferase SUVR2, Protein SET DOMAIN GROUP 18, Suppressor of variegation 3-9-related protein 2, Su(var)3-9-related protein 2, SDG18, SET18, At5g43990, MRH10.10

### **Source and Purity:**

Rabbit polyclonal antibodies were produced by immunizing animals with a GST-fusion protein containing the middle region of *arabidopsis thaliana* SUVR2 (AT5G43990). Antibodies were purified by affinity purification using immunogen.

### **Storage Buffer and Condition:**

Supplied in 1 x PBS (pH 7.4), 100 ug/ml BSA, 40% Glycerol, 0.01% NaN<sub>3</sub>. Store at -20 °C. Stable for 6 months from date of receipt.

### **Species Specificity:**

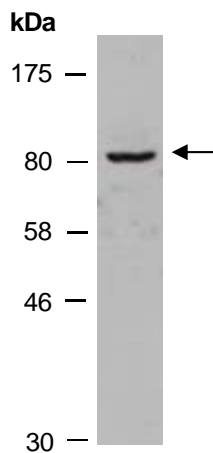
Arabidopsis thaliana

### **Tested Applications:**

WB: 1:500-1:2,000 (detect endogenous protein\*)

\*: The apparent protein size on WB may be different from the calculated M.W. due to modifications.

**Product Data:**



**Fig 1.** Western blot analysis of total protein extracts from wild type arabidopsis leaves, using anti-SUVR2 (M) (R3445-2) at RT for 2 h.