



Order: (888)-282-5810 (Phone)  
(818)-707-0392 (Fax)  
[order@abiocode.com](mailto:order@abiocode.com)  
Web: [www.Abiocode.com](http://www.Abiocode.com)

---

## **RPS6KA4 (N) Antibody, Rabbit Polyclonal**

**Cat#: R1304-1**

**Quantity: 100 ul**

**Predicted | Observed M.W.: 86 | 100 kDa**

**Lot#: Refer to vial**

**Application: WB**

**Uniprot ID: O75676**

### **Background:**

Ribosomal protein S6 kinase alpha-4 (RPS6KA4) belongs to the protein kinase superfamily, the AGC Ser/Thr protein kinase family, and the S6 kinase subfamily. RPS6KA4 is a serine/threonine-protein kinase that is required for the mitogen or stress-induced phosphorylation of the transcription factors CREB1 and ATF1 and for the regulation of the transcription factor RELA.

### **Other Names:**

Ribosomal protein S6 kinase alpha-4, 90 kDa ribosomal protein S6 kinase 4, Nuclear mitogen- and stress-activated protein kinase 2, Ribosomal protein kinase B, RSKB, MSK2, S6K-alpha-4

### **Source and Purity:**

Rabbit polyclonal antibodies were produced by immunizing animals with a GST-fusion protein containing the N-terminal region of human RPS6KA4. Antibodies were purified by affinity purification using immunogen.

### **Storage Buffer and Condition:**

Supplied in 1 x PBS (pH 7.4), 100 ug/ml BSA, 40% Glycerol, 0.01% NaN<sub>3</sub>. Store at -20 °C. Stable for 6 months from date of receipt.

### **Species Specificity:**

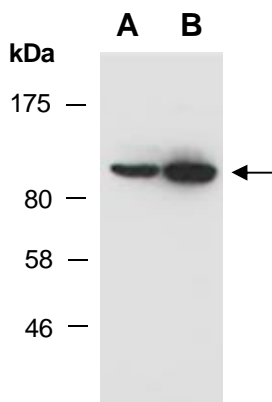
Human, Mouse

### **Tested Applications:**

WB: 1:1,000-1:3,000 (detect endogenous protein\*)

\*: The apparent protein size on WB may be different from the calculated M.W. due to modifications.

**Product Data:**



**Fig 1.** Western blot of total cell extracts from A) mouse thymus; B) human HeLa; using anti-RPS6KA4 (N) (R1304-1) at RT for 2 h.