



Order: (888)-282-5810 (Phone)
(818)-707-0392 (Fax)
order@abiocode.com
Web: www.Abiocode.com

RPS2 (C) Antibody, Rabbit Polyclonal

Cat#: R3408-2

Quantity: 100 ul

Predicted I Observed M.W.: 105 I 130 kDa

Lot#: Refer to vial

Application: WB

Uniprot ID: Q42484

Background:

RPS2 is a disease resistance (R) protein that specifically recognizes the AvrRpt2 type III effector avirulence protein from *Pseudomonas syringae*. Resistance proteins guard the plant against pathogens that contain an appropriate avirulence protein via an indirect interaction with this avirulence protein. That triggers a defense system including the hypersensitive response, which restricts the pathogen growth. RPS2 acts via its interaction with RIN4, and probably triggers the plant resistance when RIN4 is degraded by AvrRpt2.

Other Names:

Disease resistance protein RPS2, Resistance to *Pseudomonas syringae* protein 2, At4g26090, F20B18.200

Source and Purity:

Rabbit polyclonal antibodies were produced by immunizing animals with a GST-fusion protein containing the C-terminal region of *arabidopsis thaliana* RPS2 (AT4G26090). Antibodies were purified by affinity purification using immunogen.

Storage Buffer and Condition:

Supplied in 1 x PBS (pH 7.4), 100 ug/ml BSA, 40% Glycerol, 0.01% NaN₃. Store at -20 °C. Stable for 6 months from date of receipt.

Species Specificity:

Arabidopsis thaliana

Tested Applications:

WB: 1:500-1:2,000 (detect endogenous protein*)

*: The apparent protein size on WB may be different from the calculated M.W. due to modifications.



Order: (888)-282-5810 (Phone)
(818)-707-0392 (Fax)
order@abiocode.com
Web: www.Abiocode.com

Product Data:

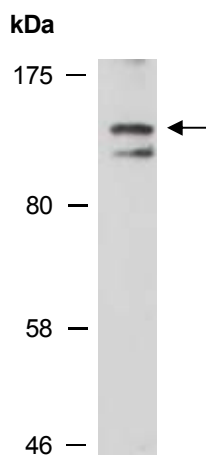


Fig 1. Western blot analysis of total protein extracts from wild type arabidopsis leaves, using anti-RPS2 (C) (R3408-2) at RT for 2 h.