



Order: (888)-282-5810 (Phone)
(818)-707-0392 (Fax)
order@abiocode.com
Web: www.Abiocode.com

PPP2R5B (N) Antibody, Rabbit Polyclonal

Cat#: R2975-2

Quantity: 100 ul

Predicted | Observed M.W.: 57 kDa

Lot#: Refer to vial

Application: WB

Uniprot ID: Q15173

Background:

Serine/threonine-protein phosphatase 2A 56 kDa regulatory subunit beta isoform (PPP2R5B) belongs to the phosphatase 2A regulatory subunit B56 family. The B regulatory subunit might modulate substrate selectivity and catalytic activity, and also might direct the localization of the catalytic enzyme to a particular subcellular compartment. The phosphorylated form mediates the interaction between AKT1 and PP2A phosphatase leading to dephosphorylation of AKT1 on the 'Thr-308' and 'Ser-373' residues.

Other Names:

Serine/threonine-protein phosphatase 2A 56 kDa regulatory subunit beta isoform, PP2A B subunit isoform B'-beta, PP2A B subunit isoform B56-beta, PP2A B subunit isoform PR61-beta, PP2A B subunit isoform R5-beta

Source and Purity:

Rabbit polyclonal antibodies were produced by immunizing animals with a GST-fusion protein containing the N-terminal region of human PPP2R5B. Antibodies were purified by affinity purification using immunogen.

Storage Buffer and Condition:

Supplied in 1 x PBS (pH 7.4), 100 ug/ml BSA, 40% Glycerol, 0.01% NaN₃. Store at -20 °C. Stable for 6 months from date of receipt.

Species Specificity:

Human, Mouse

Tested Applications:

WB: 1:1,000-1:3,000 (detect endogenous protein*)

*: The apparent protein size on WB may be different from the calculated M.W. due to modifications.

Product Data:

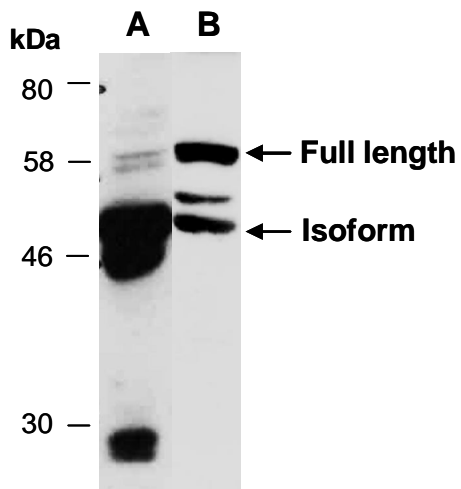


Fig 1. Western blot of total cell extracts from (A) mouse brain, (B) human Jurkat; using anti-PPP2R5B (N) (R2975-2) at RT for 2 h. This Ab appears to detect the 57 kD full length protein and a 50 kD isoform of PPP2R5B.