



Order: (888)-282-5810 (Phone)
(818)-707-0392 (Fax)
order@abiocode.com
Web: www.Abiocode.com

CBLC (C) Antibody, Rabbit Polyclonal

Cat#: R2991-2

Quantity: 100 ul

Predicted | Observed M.W.: 52 | 58 kDa

Lot#: Refer to vial

Application: WB

Uniprot ID: Q9ULV8

Background:

CBLC is a member of the Cbl family of E3 ubiquitin ligases. Cbl proteins play important roles in cell signaling through the ubiquitination and subsequent downregulation of tyrosine kinases. Expression of CBLC may be restricted to epithelial cells, and alternatively spliced transcript variants encoding multiple isoforms have been observed for this gene.

Other Names:

CBL-3, CBL-SL, RNF57, E3 ubiquitin-protein ligase CBL-C, RING finger protein 57, SH3-binding protein CBL-3, SH3-binding protein CBL-C, Signal transduction protein CBL-C

Source and Purity:

Rabbit polyclonal antibodies were produced by immunizing animals with a GST-fusion protein containing the C-terminal region of human CBLC. Antibodies were purified by affinity purification using immunogen.

Storage Buffer and Condition:

Supplied in 1 x PBS (pH 7.4), 100 ug/ml BSA, 40% Glycerol, 0.01% NaN₃. Store at -20 °C. Stable for 6 months from date of receipt.

Species Specificity:

Human, Mouse

Tested Applications:

WB: 1:1,000-1:3,000 (detect endogenous protein*)

*: The apparent protein size on WB may be different from the calculated M.W. due to modifications.

Product Data:

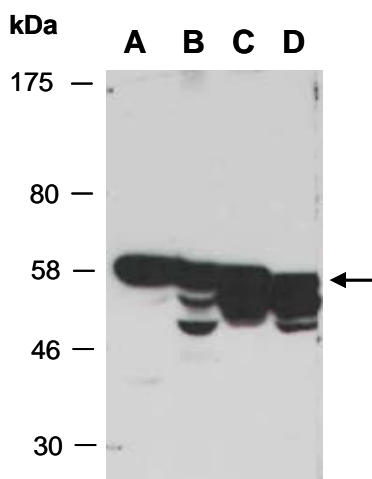


Fig 1. Western blot of total cell extracts from A) mouse brain; B) mouse thymus; C) human HeLa; D) human Jurkat; using anti-CBLC (C) (R2991-2) at RT for 2 h.