



Order: (888)-282-5810 (Phone)  
(818)-707-0392 (Fax)  
[order@abiocode.com](mailto:order@abiocode.com)  
Web: [www.Abiocode.com](http://www.Abiocode.com)

---

## **CASC5 (C) Antibody, Rabbit Polyclonal**

**Cat#: R2688-2**

**Quantity: 100 ul**

**Predicted | Observed M.W.: 265 kDa**

**Lot#: Refer to vial**

**Application: WB**

**Uniprot ID: Q8NG31**

### **Background:**

Cancer susceptibility candidate gene 5 protein (CASC5) is a component of the multiprotein assembly that is required for creation of kinetochore-microtubule attachments and chromosome segregation. CASC5 functions as a scaffold for proteins that influence the spindle assembly checkpoint during the eukaryotic cell cycle and it interacts with at least five different kinetochore proteins and two checkpoint kinases. In adults, this gene is predominantly expressed in normal testes, various cancer cell lines and primary tumors from other tissues and is ubiquitously expressed in fetal tissues. This gene was originally identified as a fusion partner with the mixed-lineage leukemia (MLL) gene in t(11;15)(q23;q14). Mutations in this gene cause autosomal recessive primary microcephaly-4 (MCPH4).

### **Other Names:**

AF15Q14, CT29, D40, hKNL-1, hSpc105, KNL1, PPP1R55, Spc7, Protein CASC5, ALL1-fused gene from chromosome 15q14 protein, Bub-linking kinetochore protein, Blinkin, Cancer susceptibility candidate gene 5 protein, Cancer/testis antigen 29, Kinetochore-null protein 1, Protein D40/AF15q14, KIAA1570, KNL1

### **Source and Purity:**

Rabbit polyclonal antibodies were produced by immunizing animals with a GST-fusion protein containing the C-terminal region of human CASC5. Antibodies were purified by affinity purification using immunogen.

### **Storage Buffer and Condition:**

Supplied in 1 x PBS (pH 7.4), 100 ug/ml BSA, 40% Glycerol, 0.01% NaN<sub>3</sub>. Store at -20 °C. Stable for 6 months from date of receipt.

### **Tested Applications:**

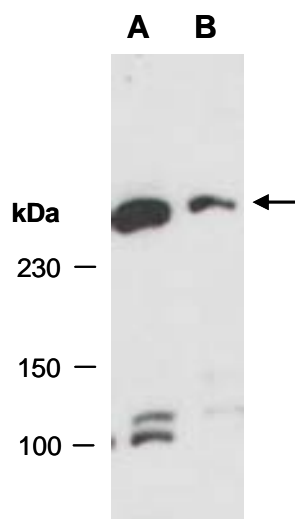
WB: 1:1,000-1:3,000 (detect endogenous protein\*)

\*: The apparent protein size on WB may be different from the calculated M.W. due to modifications.

**Species Specificity:**

Human

**Product Data:**



**Fig 1.** Western blot of total cell extracts from A) human HeLa; B) human Jurkat; using anti-CASC5 (C) (R2688-2) at RT for 2 h.