



Order: (888)-282-5810 (Phone)
(818)-707-0392 (Fax)
order@abiocode.com
Web: www.Abiocode.com

SYCP1 (N) Antibody, Rabbit Polyclonal

Cat#: R3033-1

Quantity: 100 ul

Predicted | Observed M.W.: 114 kDa

Lot#: Refer to vial

Application: WB

Uniprot ID: Q15431

Background:

Synaptonemal complex protein 1 (SYCP1) is a major component of the transverse filaments of synaptonemal complexes (SCS), formed between homologous chromosomes during meiotic prophase.

Other Names:

Synaptonemal complex protein 1, SCP-1, Cancer/testis antigen 8, CT8, SCP1

Source and Purity:

Rabbit polyclonal antibodies were produced by immunizing animals with a GST-fusion protein containing the N-terminal region of human SYCP1. Antibodies were purified by affinity purification using immunogen.

Storage Buffer and Condition:

Supplied in 1 x PBS (pH 7.4), 100 ug/ml BSA, 40% Glycerol, 0.01% NaN₃. Store at -20 °C. Stable for 6 months from date of receipt.

Species Specificity:

Human, Mouse

Tested Applications:

WB: 1:1,000-1:3,000 (detect endogenous protein*)

*: The apparent protein size on WB may be different from the calculated M.W. due to modifications.

Product Data:

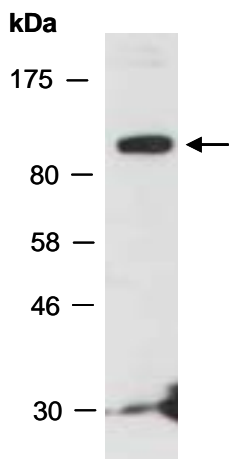


Fig 1. Western blot of total cell extracts from mouse brain; using anti-SYCP1 (N) (R3033-1) at RT for 2 h.