



Order: (888)-282-5810 (Phone)
(818)-707-0392 (Fax)
order@abiocode.com
Web: www.Abiocode.com

CCA1 (C) Antibody, Rabbit Polyclonal

Cat#: R1234-3

Lot#: Refer to vial

Quantity: 100 ul

Application: WB

Predicted | Observed M.W.: 67 | 65-78 kDa

Uniprot ID: P92973

Background:

Protein CCA1 is a transcription factor involved in the circadian clock and in the phytochrome regulation. CCA1 binds to the promoter regions of APRR1/TOC1 and TCP21/CHE to repress their transcription. CCA1 also binds to the promoter regions of CAB2A and CAB2B to promote their transcription. Furthermore, CCA1 represses both LHY and itself.

Other Names:

Protein CCA1, MYB-related transcription factor CCA1, Protein CIRCADIAN CLOCK ASSOCIATED 1, At2g46830

Source and Purity:

Rabbit polyclonal antibodies were produced by immunizing animals with a GST-fusion protein containing the C-terminal region of *arabidopsis thaliana* CCA1 (At2g46830). Antibodies were purified by affinity purification using immunogen.

Storage Buffer and Condition:

Supplied in 1 x PBS (pH 7.4), 100 ug/ml BSA, 40% Glycerol, 0.01% NaN₃. Store at -20 °C. Stable for 6 months from date of receipt.

Species Specificity:

Arabidopsis thaliana

Tested Applications:

WB: 1:500-1:2,000 (detect endogenous protein*)

*: The apparent protein size on WB may be different from the calculated M.W. due to modifications.

Product Data:

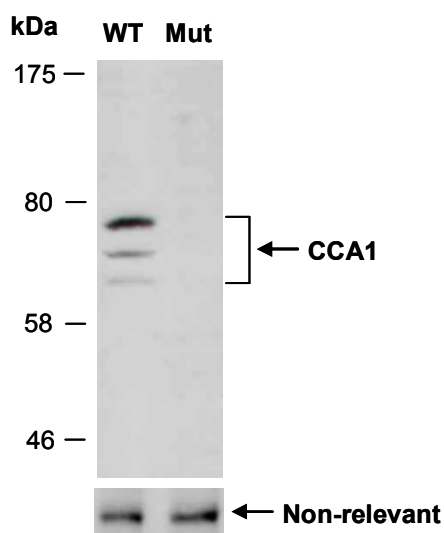


Fig 1. Western blot analysis of equal amounts of protein extracts (Cat# L1234) from wild type (WT) or CCA1-deficient mutant (Mut: *cca1-1*) Arabidopsis leaves harvested 1 hr post light stimulation under the long-day photoperiod condition, using anti-CCA1 (C) (R1234-3) at RT for 2 hr. The same filter was re-probed with a non-relevant antibody for loading controls.



Order: (888)-282-5810 (Phone)
(818)-707-0392 (Fax)
order@abiocode.com
Web: www.Abiocode.com

**For research use only. Not for therapeutic or diagnostic purposes.
Abiocode, Inc., 29397 Agoura Rd., Ste 106, Agoura Hills, CA 91301**