



Order: (888)-282-5810 (Phone)
(818)-707-0392 (Fax)
order@abiocode.com
Web: www.Abiocode.com

CASP1 (N) Antibody, Rabbit Polyclonal

Cat#: R0907-1

Quantity: 100 ul

Predicted | Observed MW: 45, 20 | 50, 20 kDa

Lot#: Refer to vial

Application: WB

Uniprot ID: P29466

Background:

Caspase-1 (CASP1) belongs to the peptidase C14A family. CASP1 is a thiol protease that cleaves IL-1 beta between an Asp and an Ala, releasing the mature cytokine which is involved in a variety of inflammatory processes. CASP1 is important for defense against pathogens. It cleaves and activates sterol regulatory element binding proteins (SREBPs). CASP1 can also promote apoptosis. Full length CASP1 is further cleaved in 2 subunits, p20 and p10.

Other Names:

Caspase-1, Short name=CASP-1, Interleukin-1 beta convertase, IL-1BC, Interleukin-1 beta-converting enzyme, ICE, IL-1 beta-converting enzyme, p45, IL1BC, IL1BCE

Source and Purity:

Rabbit polyclonal antibodies were produced by immunizing animals with a GST-fusion protein containing the N-terminal region of human CASP1. Antibodies were purified by affinity purification using immunogen.

Storage Buffer and Condition:

Supplied in 1 x PBS (pH 7.4), 100 ug/ml BSA, 40% Glycerol, 0.01% NaN₃. Store at -20 °C. Stable for 6 months from date of receipt.

Species Specificity:

Human, Mouse

Tested Applications:

WB: 1:1,000-1:3,000 (detect endogenous protein*)

*: The apparent protein size on WB may be different from the calculated M.W. due to modifications.

Product Data:

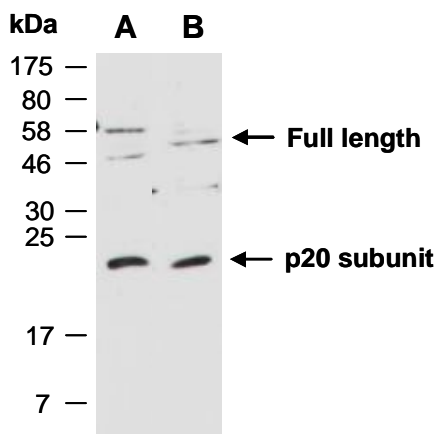


Fig 1. Western blot of total cell extracts from A) mouse thymus; B) human Jurkat; using anti-CASP1 (N) (R0907-1) at RT for 2 h.