



Order: (888)-282-5810 (Phone)  
(818)-707-0392 (Fax)  
[order@abiocode.com](mailto:order@abiocode.com)  
Web: [www.Abiocode.com](http://www.Abiocode.com)

---

## **CBY1 (N) Antibody, Rabbit Polyclonal**

**Cat#: R1392-1**

**Quantity: 100 ul**

**Predicted | Observed M.W.: 14 | 17 kDa**

**Lot#: Refer to vial**

**Application: WB**

**Uniprot ID: Q9Y3M2**

### **Background:**

Protein chibby homolog 1 (CBY1) belongs to the chibby family. CBY1 inhibits the Wnt/Wingless pathway by binding to beta-catenin and inhibiting beta-catenin-mediated transcriptional activation through competition with TCF/LEF transcription factors. Furthermore, CBY1 has been shown to play a role in regulating the intracellular trafficking of polycystin-2/PKD2 and possibly of other intracellular proteins. CBY1 also promotes adipocyte and cardiomyocyte differentiation.

### **Other Names:**

ARPP-binding protein, Cytosolic leucine-rich protein, PIGEA-14, PKD2 interactor, Golgi and endoplasmic reticulum-associated 1, ARB1, C22orf2, CBY, PGEA1

### **Source and Purity:**

Rabbit polyclonal antibodies were produced by immunizing animals with a GST-fusion protein containing the N-terminal region of human CBY1. Antibodies were purified by affinity purification using immunogen.

### **Storage Buffer and Condition:**

Supplied in 1 x PBS (pH 7.4), 100 ug/ml BSA, 40% Glycerol, 0.01% NaN<sub>3</sub>. Store at -20 °C. Stable for 6 months from date of receipt.

### **Species Specificity:**

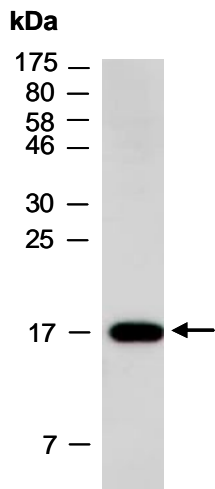
Human

### **Tested Applications:**

WB: 1:1,000-1:3,000 (detect endogenous protein\*)

\*: The apparent protein size on WB may be different from the calculated M.W. due to modifications.

**Product Data:**



**Fig 1.** Western blot of total cell extracts from human HeLa; using anti-CBY1 (N) (R1392-1) at RT for 2 h.