



Order: (888)-282-5810 (Phone)
(818)-707-0392 (Fax)
order@abiocode.com
Web: www.Abiocode.com

RXFP1 (C1) Antibody, Rabbit Polyclonal

Cat#: R2805-2

Quantity: 100 ul

Predicted | Observed M.W.: 87 | 110 kDa

Lot#: Refer to vial

Application: WB, IP

Uniprot ID: Q9HBX9

Background:

Relaxin family peptide receptor 1 (RXFP1) is a member of the leucine-rich repeat-containing subgroup of the G protein-coupled 7-transmembrane receptor superfamily. RXFP1 plays a critical role in sperm motility, pregnancy and parturition as a receptor for the protein hormone relaxin. Decreased expression of the RXFP1 gene may play a role in endometriosis. Alternatively spliced transcript variants encoding multiple isoforms have been observed for this gene [provided by RefSeq].

Other Names:

Relaxin receptor 1, Leucine-rich repeat-containing G-protein coupled receptor 7, Relaxin family peptide receptor 1, LGR7, RXFP1

Source and Purity:

Rabbit polyclonal antibodies were produced by immunizing animals with a GST-fusion protein containing the C-terminal region of human RXFP1. Antibodies were purified by affinity purification using immunogen.

Storage Buffer and Condition:

Supplied in 1 x PBS (pH 7.4), 100 ug/ml BSA, 40% Glycerol, 0.01% NaN₃. Store at -20 °C. Stable for 6 months from date of receipt.

Species Specificity:

Human, Mouse

Tested Applications:

WB: 1:1,000-1:3,000 (detect endogenous protein*)

IP: 1:100-1:200

*: The apparent protein size on WB may be different from the calculated M.W. due to modifications.

Product Data:

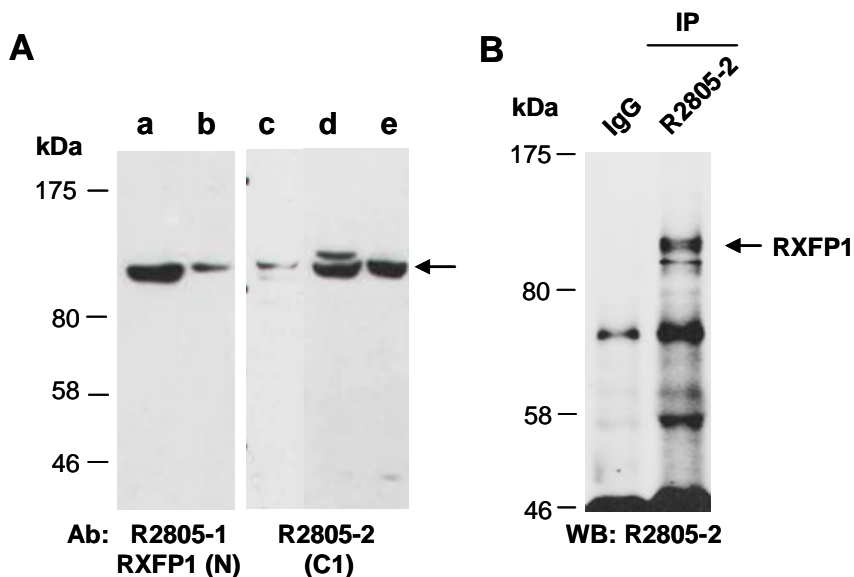


Fig 1. A) Western blot of total cell extracts from a,d. human HeLa, c. mouse brain, b,e. human Jurkat; using 2 independent Abs against 2 distinct regions of human RXFP1 at RT for 2 h. **B)** Total extracts from human HeLa were immunoprecipitated with IgG or anti-RXFP1 (C1) (R2805-2); followed by WB with the same Ab.