



Order: (888)-282-5810 (Phone)
(818)-707-0392 (Fax)
order@abiocode.com
Web: www.Abiocode.com

CAND1 (N) Antibody, Rabbit Polyclonal

Cat#: R0878-1

Quantity: 100 ul

Predicted | Observed M.W.: 136 kDa

Lot#: Refer to vial

Application: WB

Uniprot ID: Q86VP6

Background:

Cullin-associated NEDD8-dissociated protein 1 (CAND1) belongs to the CAND family. CAND1 is a key assembly factor of SCF (SKP1-CUL1-F-box protein) E3 ubiquitin ligase complexes that promotes the exchange of the substrate-recognition F-box subunit in SCF complexes, thereby playing a key role in the cellular repertoire of SCF complexes. CAND1 acts as a F-box protein exchange factor. The exchange activity of CAND1 is coupled with cycles of neddylation conjugation: in the deneddylated state, cullin-binding CAND1 binds CUL1-RBX1, increasing dissociation of the SCF complex and promoting exchange of the F-box protein.

Other Names:

Cullin-associated NEDD8-dissociated protein 1, Cullin-associated and neddylation-dissociated protein 1, TBP-interacting protein of 120 kDa A, TBP-interacting protein 120A, p120 CAND1, KIAA0829, TIP120, TIP120A

Source and Purity:

Rabbit polyclonal antibodies were produced by immunizing animals with a GST-fusion protein containing N-terminal region of human CAND1. Antibodies were purified by affinity purification using immunogen.

Storage Buffer and Condition:

Supplied in 1 x PBS (pH 7.4), 100 ug/ml BSA, 40% Glycerol, 0.01% NaN₃. Store at -20 °C. Stable for 6 months from date of receipt.

Species Specificity:

Human, Mouse

Tested Applications:

WB: 1:1,000-1:3,000 (detect endogenous protein*)

*: The apparent protein size on WB may be different from the calculated M.W. due to modifications.

Product Data:

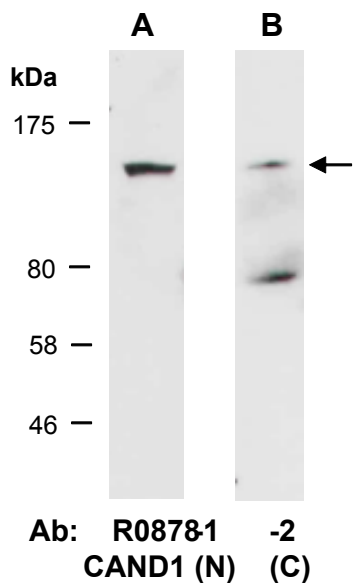


Fig 1. Western blot of total cell extracts from (A, B) mouse brain, using 2 independent Abs against 2 distinct regions of human CAND1 at RT for 2 h.