



Order: (888)-282-5810 (Phone)  
(818)-707-0392 (Fax)  
[order@abiocode.com](mailto:order@abiocode.com)  
Web: [www.Abiocode.com](http://www.Abiocode.com)

---

## **FAM96B (N) Antibody, Rabbit Polyclonal**

**Cat#: R2885-1**

**Quantity: 100 ul**

**Predicted | Observed M.W.: 18 kDa**

**Lot#: Refer to vial**

**Application: WB**

**Uniprot ID: Q9Y3D0**

### **Background:**

Mitotic spindle-associated MMXD complex subunit MIP18 (FAM96B) belongs to the MIP18 family and is a component of the cytosolic iron-sulfur protein assembly (CIA) complex, a multiprotein complex that mediates the incorporation of iron-sulfur cluster into extramitochondrial Fe/S proteins. As part of the mitotic spindle-associated MMXD complex, FAM96B plays a role in chromosome segregation, probably by facilitating iron-sulfur cluster assembly into ERCC2/XPD.

### **Other Names:**

Mitotic spindle-associated MMXD complex subunit MIP18, MSS19-interacting protein of 18 kDa, Protein FAM96B, MIP18

### **Source and Purity:**

Rabbit polyclonal antibodies were produced by immunizing animals with a GST-fusion protein containing the N-terminal region of human FAM96B. Antibodies were purified by affinity purification using immunogen.

### **Storage Buffer and Condition:**

Supplied in 1 x PBS (pH 7.4), 100 ug/ml BSA, 40% Glycerol, 0.01% NaN<sub>3</sub>. Store at -20 °C. Stable for 6 months from date of receipt.

### **Species Specificity:**

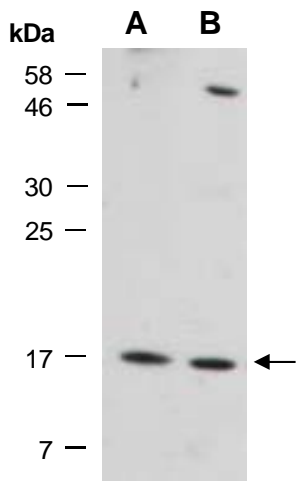
Human, Mouse

### **Tested Applications:**

WB: 1:1,000-1:3,000 (detect endogenous protein\*)

\*: The apparent protein size on WB may be different from the calculated M.W. due to modifications.

**Product Data:**



**Fig 1.** Western blot of total cell extracts from (A) mouse thymus; (B) human HeLa; using anti-FAM96B (N) (R2885-1) at RT for 2 h.