



Order: (888)-282-5810 (Phone)
(818)-707-0392 (Fax)
order@abiocode.com
Web: www.Abiocode.com

CCDC6 (C) Antibody, Rabbit Polyclonal

Cat#: R2564-2

Quantity: 100 ul

Predicted | Observed MW: 53 | 70 kDa

Lot#: Refer to vial

Application: WB

Uniprot ID: Q16204

Background:

CCDC6 is a coiled-coil domain-containing protein and is ubiquitously expressed and may function as a tumor suppressor. A chromosomal rearrangement resulting in the expression of a fusion gene containing a portion of CCDC6 and the intracellular kinase-encoding domain of the ret proto-oncogene is the cause of thyroid papillary carcinoma [provided by RefSeq].

Other Names:

Coiled-coil domain-containing protein 6, Papillary thyroid carcinoma-encoded protein, Protein H4, D10S170, TST1, D10S170, H4, PTC, TPC

Source and Purity:

Rabbit polyclonal antibodies were produced by immunizing animals with a GST-fusion protein containing the C-terminal region of human CCDC6. Antibodies were purified by affinity purification using immunogen.

Storage Buffer and Condition:

Supplied in 1 x PBS (pH 7.4), 100 ug/ml BSA, 40% Glycerol, 0.01% NaN₃. Store at -20 °C. Stable for 6 months from date of receipt.

Species Specificity:

Human, Mouse

Tested Applications:

WB: 1:1,000-1:3,000 (detect endogenous protein*)

*: The apparent protein size on WB may be different from the calculated M.W. due to modifications.

Product Data:

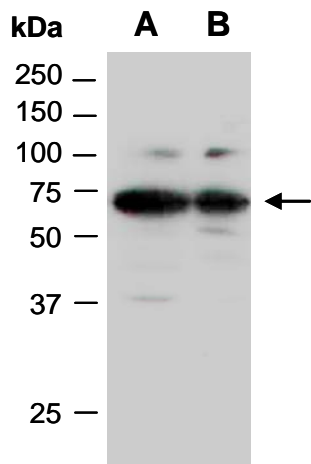


Fig 1. Western blot of total cell extracts from A) human HeLa, B) human Jurkat; using anti-CCDC6 (C) (R2564-2) at RT for 2 h.