



Order: (888)-282-5810 (Phone)
(818)-707-0392 (Fax)
order@abiocode.com
Web: www.Abiocode.com

RPN1 (N) Antibody, Rabbit Polyclonal

Cat#: R2432-1

Quantity: 100 ul

Predicted | Observed M.W.: 69 kDa

Lot#: Refer to vial

Application: WB

Uniprot ID: P04843

Background:

Ribophorin I (RPN1) is a type I integral membrane protein found only in the rough endoplasmic reticulum. RPN1 is part of an N-oligosaccharyl transferase complex that links high mannose oligosaccharides to asparagine residues found in the Asn-X-Ser/Thr consensus motif of nascent polypeptide chains. RPN1 forms part of the regulatory subunit of the 26S proteasome and may mediate binding of ubiquitin-like domains to this proteasome [provided by RefSeq].

Other Names:

Dolichyl-diphosphooligosaccharide--protein glycosyltransferase subunit 1, Dolichyl-diphosphooligosaccharide--protein glycosyltransferase 67 kDa subunit, Ribophorin I, RPN-I, Ribophorin-1

Source and Purity:

Rabbit polyclonal antibodies were produced by immunizing animals with a GST-fusion protein containing the N-terminal region of human RPN1. Antibodies were purified by affinity purification using immunogen.

Storage Buffer and Condition:

Supplied in 1 x PBS (pH 7.4), 100 ug/ml BSA, 40% Glycerol, 0.01% NaN₃. Store at -20 °C. Stable for 6 months from date of receipt.

Species Specificity:

Human, Mouse

Tested Applications:

WB: 1:1,000-1:3,000 (detect endogenous protein*)

*: The apparent protein size on WB may be different from the calculated M.W. due to modifications.

Product Data:

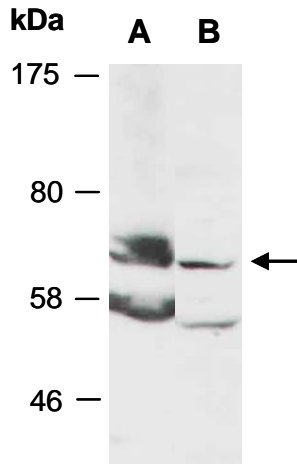


Fig 1. Western blot of total cell extracts from A) mouse brain, B) human HeLa; using anti-RPN1 (N) (R2432-1) at RT for 2 h.