



Order: (888)-282-5810 (Phone)  
(818)-707-0392 (Fax)  
[order@abiocode.com](mailto:order@abiocode.com)  
Web: [www.Abiocode.com](http://www.Abiocode.com)

---

## **SEH1L (N) Antibody, Rabbit Polyclonal**

**Cat#: R3161-1**

**Quantity: 100 ul**

**Predicted | Observed M.W.: 40 kDa**

**Lot#: Refer to vial**

**Application: WB**

**Uniprot ID: Q96EE3**

### **Background:**

Nucleoporin SEH1 (SEH1L) is a component of the Nup107-160 subcomplex of the nuclear pore complex (NPC). The Nup107-160 subcomplex is required for the assembly of a functional NPC. The Nup107-160 subcomplex is also required for normal kinetochore microtubule attachment, mitotic progression and chromosome segregation. SEH1L plays a role in recruitment of the Nup107-160 subcomplex to the kinetochore. As a component of the GATOR2 complex, SEH1L inhibits GATOR1 complex, an inhibitor of the amino acid-sensing branch of the TORC1 pathway.

### **Other Names:**

Nucleoporin SEH1, Nup107-160 subcomplex subunit SEH1, SEC13-like protein, SEC13L, SEH1

### **Source and Purity:**

Rabbit polyclonal antibodies were produced by immunizing animals with a GST-fusion protein containing the N-terminal region of human SEH1L. Antibodies were purified by affinity purification using immunogen.

### **Storage Buffer and Condition:**

Supplied in 1 x PBS (pH 7.4), 100 ug/ml BSA, 40% Glycerol, 0.01% NaN<sub>3</sub>. Store at -20 °C. Stable for 6 months from date of receipt.

### **Species Specificity:**

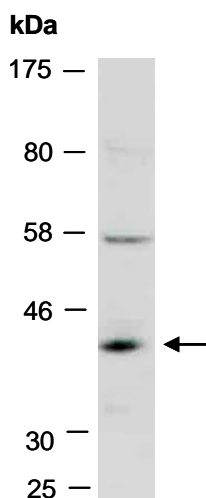
Human, Mouse

### **Tested Applications:**

WB: 1:1,000-1:3,000 (detect endogenous protein\*)

\*: The apparent protein size on WB may be different from the calculated M.W. due to modifications.

**Product Data:**



**Fig 1.** Western blot of total cell extracts from mouse thymus; using anti-SEH1L (N) (R3161-1) at RT for 2 h.