



Order: (888)-282-5810 (Phone)
(818)-707-0392 (Fax)
order@abiocode.com
Web: www.Abiocode.com

SYCP3 (C) Antibody, Rabbit Polyclonal

Cat#: R3069-2

Quantity: 100 ul

Predicted | Observed M.W.: 28 kDa

Lot#: Refer to vial

Application: WB

Uniprot ID: Q8IZU3

Background:

Synaptonemal complex protein 3 (SYCP3) is a testis-specific nuclear protein. SYCP3 is a component of the transverse filaments of synaptonemal complexes (SCS), formed between homologous chromosomes during meiotic prophase. SYCP3 has an essential meiotic function in spermatogenesis and may be important for testis development.

Other Names:

Synaptonemal complex protein 3, SCP-3, SCP3

Source and Purity:

Rabbit polyclonal antibodies were produced by immunizing animals with a GST-fusion protein containing the C-terminal region of human SYCP3. Antibodies were purified by affinity purification using immunogen.

Storage Buffer and Condition:

Supplied in 1 x PBS (pH 7.4), 100 ug/ml BSA, 40% Glycerol, 0.01% NaN₃. Store at -20 °C. Stable for 6 months from date of receipt.

Species Specificity:

Human

Tested Applications:

WB: 1:1,000-1:3,000 (detect endogenous protein*)

*: The apparent protein size on WB may be different from the calculated M.W. due to modifications.

Product Data:

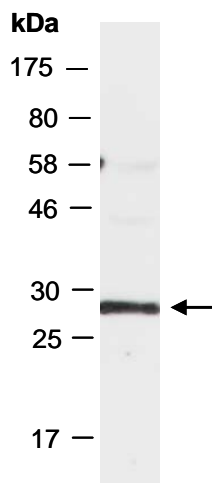


Fig 1. Western blot of total cell extracts from human HeLa; using anti-SYCP3 (C) (R3069-2) at RT for 2 h.