



Order: (888)-282-5810 (Phone)
(818)-707-0392 (Fax)
order@abiocode.com
Web: www.Abiocode.com

RTEL1 (N) Antibody, Rabbit Polyclonal

Cat#: R2949-1

Quantity: 100 ul

Predicted | Observed M.W.: 134 | 150 kDa

Lot#: Refer to vial

Application: WB

Uniprot ID: Q9NZ71

Background:

Regulator of telomere elongation helicase 1 (RTEL1) is a nuclear protein that belongs to the helicase family and RAD3/XPD subfamily. RTEL1 is an ATP-dependent DNA helicase required to suppress inappropriate homologous recombination, thereby playing a central role in DNA repair and in the maintenance of genomic stability. RTEL1 antagonizes homologous recombination by promoting the disassembly of D loop recombination intermediates. RTEL1 is also required to regulate telomere length; probably due to its anti-recombinase function. RTEL1 is amplified in gastric tumors.

Other Names:

Regulator of telomere elongation helicase 1, Novel helicase-like, C20orf41, KIAA1088, NHL, bK3184A7.3, DKFZP434C013, RTEL

Source and Purity:

Rabbit polyclonal antibodies were produced by immunizing animals with a GST-fusion protein containing the N-terminal region of human RTEL1. Antibodies were purified by affinity purification using immunogen.

Storage Buffer and Condition:

Supplied in 1 x PBS (pH 7.4), 100 ug/ml BSA, 40% Glycerol, 0.01% NaN₃. Store at -20 °C. Stable for 6 months from date of receipt.

Species Specificity:

Human, Mouse

Tested Applications:

WB: 1:1,000-1:3,000 (detect endogenous protein*)

*: The apparent protein size on WB may be different from the calculated M.W. due to modifications.

Product Data:

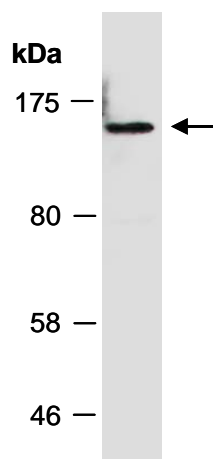


Fig 1. Western blot of total cell extracts from mouse thymus; using anti-RTEL1 (N) (R2949-1) at RT for 2 h.