



Order: (888)-282-5810 (Phone)
(818)-707-0392 (Fax)
order@abiocode.com
Web: www.Abiocode.com

BAP1 (C) Antibody, Rabbit Polyclonal

Cat#: R2989-2

Quantity: 100 ul

Predicted | Observed M.W.: 80 | 100 kDa

Lot#: Refer to vial

Application: WB, IP

Uniprot ID: Q92560

Background:

Ubiquitin carboxyl-terminal hydrolase BAP1 belongs to the peptidase C12 family and the BAP1 subfamily. BAP1 is a deubiquitinating enzyme that plays a key role in chromatin by mediating deubiquitination of histone H2A and HCFC1. BAP1 is a catalytic component of the PR-DUB complex, a complex that specifically mediates deubiquitination of histone H2A monoubiquitinated at 'Lys-119' (H2AK119ub1). BAP1 does not deubiquitinate monoubiquitinated histone H2B.

Other Names:

Ubiquitin carboxyl-terminal hydrolase BAP1, BRCA1-associated protein 1, Cerebral protein 6, KIAA0272

Source and Purity:

Rabbit polyclonal antibodies were produced by immunizing animals with a GST-fusion protein containing the C-terminal region of human BAP1. Antibodies were purified by affinity purification using immunogen.

Storage Buffer and Condition:

Supplied in 1 x PBS (pH 7.4), 100 ug/ml BSA, 40% Glycerol, 0.01% NaN₃. Store at -20 °C. Stable for 6 months from date of receipt.

Species Specificity:

Human

Tested Applications:

WB: 1:1,000-1:3,000 (detect endogenous protein*)

IP: 1:100-1:200

*: The apparent protein size on WB may be different from the calculated M.W. due to modifications.

Product Data:

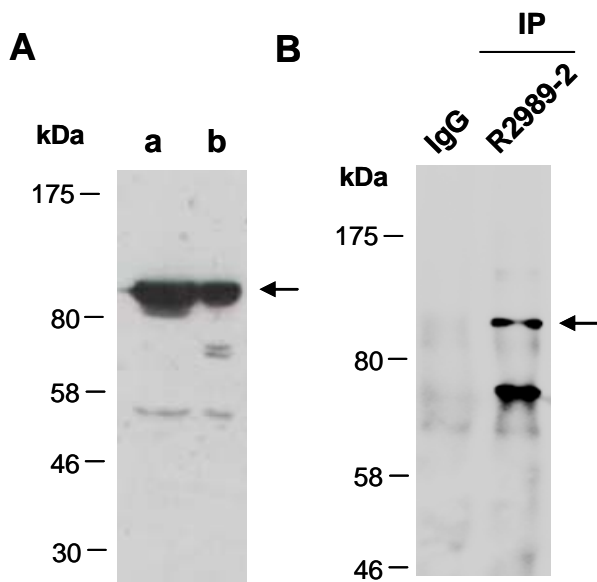


Fig 1. (A) Western blot of total cell extracts from a. human HeLa, b. human Jurkat; using anti-BAP1 (C) (R2989-2) at RT for 2 h. **(B)** Total extracts from human HeLa were immunoprecipitated (IP) with IgG or anti-BAP1 (C) (R2989-2); followed by WB with the same Ab and Rabbit IgG light chain-specific 2nd antibody.