



Order: (888)-282-5810 (Phone)
(818)-707-0392 (Fax)
order@abiocode.com
Web: www.Abiocode.com

CARD14 (C) Antibody, Rabbit Polyclonal

Cat#: R1341-2

Quantity: 100 ul

Predicted | Observed M.W.: 113 | 140 kDa

Lot#: Refer to vial

Application: WB

Uniprot ID: Q9BXL6

Background:

Caspase recruitment domain-containing protein 14 (CARD14) is a caspase recruitment domain-containing protein that is a member of the membrane-associated guanylate kinase (MAGUK) family of proteins. Members of this protein family are scaffold proteins that are involved in a diverse array of cellular processes including cellular adhesion, signal transduction and cell polarity control. CARD14 has been shown to specifically interact with BCL10, a protein known to function as a positive regulator of cell apoptosis and NF-kappaB activation. Alternate splicing results in multiple transcript variants [provided by RefSeq].

Other Names:

Caspase recruitment domain-containing protein 14, CARD-containing MAGUK protein 2, Carma 2, CARMA2

Source and Purity:

Rabbit polyclonal antibodies were produced by immunizing animals with a GST-fusion protein containing the C-terminal region of human CARD14. Antibodies were purified by affinity purification using immunogen.

Storage Buffer and Condition:

Supplied in 1 x PBS (pH 7.4), 100 ug/ml BSA, 40% Glycerol, 0.01% NaN₃. Store at -20 °C. Stable for 6 months from date of receipt.

Species Specificity:

Human

Tested Applications:

WB: 1:1,000-1:3,000 (detect endogenous protein*)

*: The apparent protein size on WB may be different from the calculated M.W. due to modifications.

Product Data:

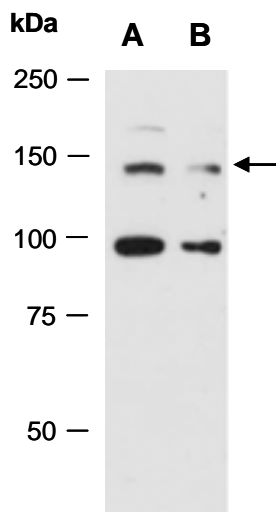


Fig 1. Western blot of total cell extracts from (A) human HeLa, (B) human Jurkat; using anti-CARD14 (C) (R1341-2) at RT for 2 h.