



Order: (888)-282-5810 (Phone)
(818)-707-0392 (Fax)
order@abiocode.com
Web: www.Abiocode.com

CAPN1 (C) Antibody, Rabbit Polyclonal

Cat#: R1522-2

Quantity: 100 ul

Predicted | Observed M.W.: 82 | 90 kDa

Lot#: Refer to vial

Application: WB

Uniprot ID: P07384

Background:

Calpain-1 catalytic subunit (CAPN1) belongs to the peptidase C2 family and is a calcium-regulated non-lysosomal thiol-protease which catalyze limited proteolysis of substrates involved in cytoskeletal remodeling and signal transduction.

Other Names:

Calpain-1 catalytic subunit, Calcium-activated neutral proteinase 1, CANP 1, Calpain mu-type, Calpain-1 large subunit, Cell proliferation-inducing gene 30 protein, Micromolar-calpain, muCANP, CANPL1

Source and Purity:

Rabbit polyclonal antibodies were produced by immunizing animals with a GST-fusion protein containing the C-terminal region of human CAPN1. Antibodies were purified by affinity purification using immunogen.

Storage Buffer and Condition:

Supplied in 1 x PBS (pH 7.4), 100 ug/ml BSA, 40% Glycerol, 0.01% NaN₃. Store at -20 °C. Stable for 6 months from date of receipt.

Species Specificity:

Human, Mouse

Tested Applications:

WB: 1:1,000-1:3,000 (detect endogenous protein*)

*: The apparent protein size on WB may be different from the calculated M.W. due to modifications.

Product Data:

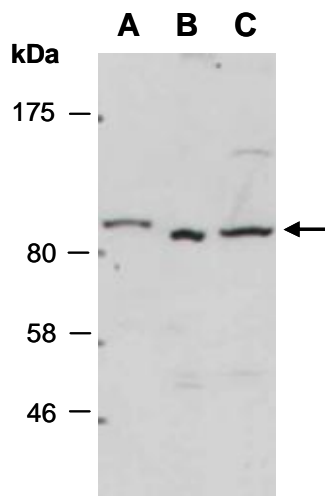


Fig 1. Western blot of total cell extracts from (A) mouse brain, (B) mouse thymus, (C) human HeLa; using anti-CAPN1 (C) (R1522-2) at RT for 2 h.