



Order: (888)-282-5810 (Phone)
(818)-707-0392 (Fax)
order@abiocode.com
Web: www.Abiocode.com

EGR2 (C) Antibody, Rabbit Polyclonal

Cat#: R0814-3

Quantity: 100 ul

Predicted | Observed MW: 50 | 60 kDa

Lot#: Refer to vial

Application: WB, IP, ChIP

Uniprot ID: P11161

Background:

E3 SUMO-protein ligase EGR2 belongs to the EGR C2H2-type zinc-finger protein family. EGR2 is a sequence-specific DNA-binding transcription factor and binds to two specific DNA sites located in the promoter region of HOXA4. EGR2 helps SUMO1 conjugation to its coregulators NAB1 and NAB2, whose sumoylation down-regulates EGR2 own transcriptional activity. Defects in EGR2 are a cause of congenital hypomyelination neuropathy (CHN), of Charcot-Marie-Tooth disease type 1D (CMT1D), and of Dejerine-Sottas syndrome (DSS).

Other Names:

E3 SUMO-protein ligase EGR2, AT591, Early growth response protein 2, Zinc finger protein Krox-20, EGR-2, KROX20

Source and Purity:

Rabbit polyclonal antibodies were produced by immunizing animals with a GST-fusion protein containing the C-terminal region of human EGR2. Antibodies were purified by affinity purification using immunogen.

Storage Buffer and Condition:

Supplied in 1 x PBS (pH 7.4), 100 ug/ml BSA, 40% Glycerol, 0.01% NaN₃. Store at -20 °C. Stable for 6 months from date of receipt.

Species Specificity:

Human, Mouse

Tested Applications:

WB: 1:1,000-1:3,000 (detect endogenous protein*)

IP & ChIP: 1:100-1:200

*: The apparent protein size on WB may be different from the calculated M.W. due to modifications.

Product Data:

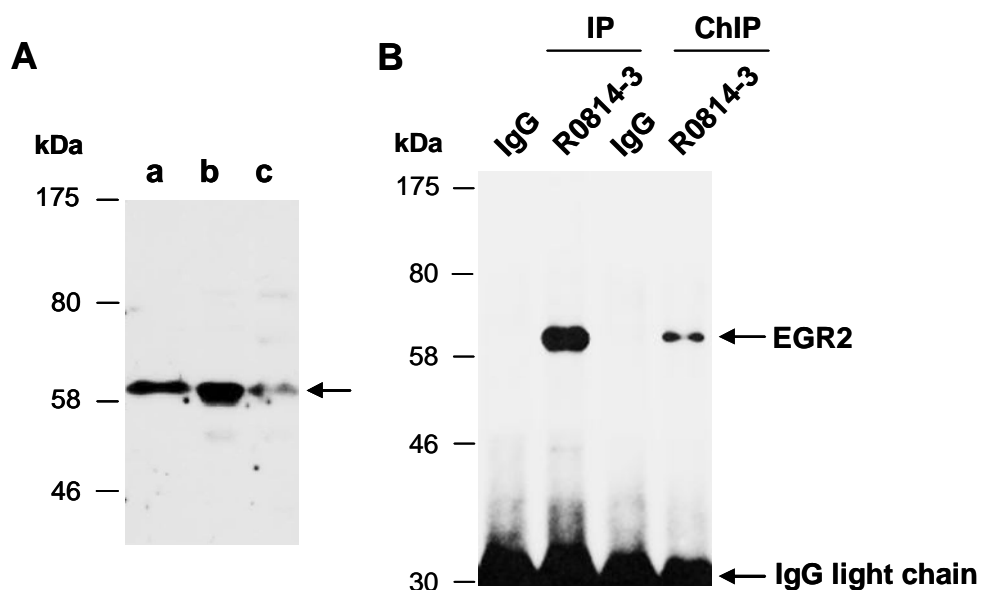


Fig 1. (A) Western blot of total cell extracts from a. mouse brain, b. mouse thymus, c. human HeLa; using anti-EGR2 (C) (R0814-3) at RT for 2 h. **(B)** Total extracts from mouse thymus were immunoprecipitated (IP) with IgG or anti-EGR2 (C) (R0814-3) under the conventional IP conditions or cross-linked chromatin immunoprecipitation (ChIP) conditions; followed by WB with the same Ab and Rabbit IgG light chain-specific 2nd antibody.