



Order: (888)-282-5810 (Phone)
(818)-707-0392 (Fax)
order@abiocode.com
Web: www.Abiocode.com

RRP7A (C1) Antibody, Rabbit Polyclonal

Cat#: R0731-2

Quantity: 100 ul

Predicted | Observed MW: 32 | 40 kDa

Lot#: Refer to vial

Application: WB, IP

Uniprot ID: Q9Y3A4

Background:

Ribosomal RNA-processing protein 7 homolog A (RRP7A) belongs to the RRP7 family, which is a RNA binding protein containing 1 RRM (RNA recognition motif) domain. RRP7 is essential for the processing of pre-rRNA.

Other Names:

Ribosomal RNA-processing protein 7 homolog A, Gastric cancer antigen Zg14, CGI-96

Source and Purity:

Rabbit polyclonal antibodies were produced by immunizing animals with a GST-fusion protein containing the C-terminal region of human RRP7A. Antibodies were purified by affinity purification using immunogen.

Storage Buffer and Condition:

Supplied in 1 x PBS (pH 7.4), 100 ug/ml BSA, 40% Glycerol, 0.01% NaN₃. Store at -20 °C. Stable for 6 months from date of receipt.

Species Specificity:

Human, Mouse

Tested Applications:

WB: 1:1,000-1:3,000 (detect endogenous protein*)

IP: 1:100 - 1:200

*: The apparent protein size on WB may be different from the calculated M.W. due to modifications.

Product Data:

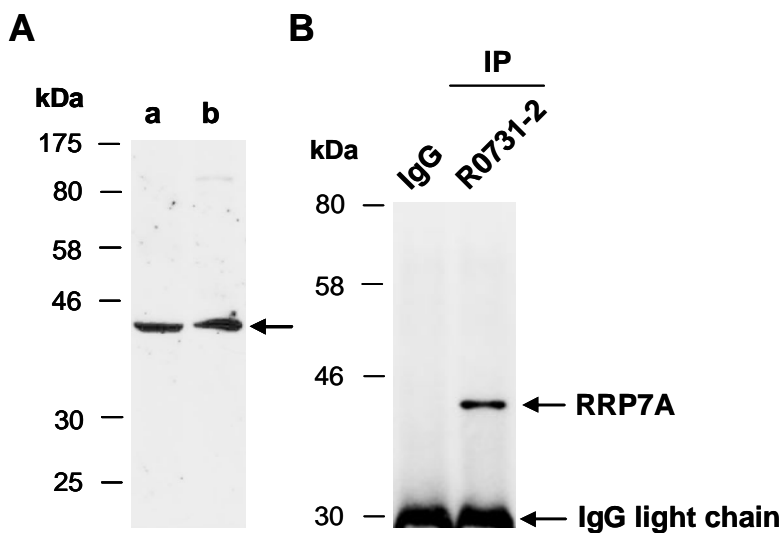


Fig 1. (A) Western blot of total cell extracts from a. mouse brain, b. mouse thymus; using anti-RRP7A (C1) (R0731-2) at RT for 2 h. **(B)** Total extracts from mouse thymus were immunoprecipitated (IP) with IgG or anti-RRP7A (C1) (R0731-2); followed by WB with the same Ab and Rabbit IgG light chain-specific 2nd antibody.