



Order: (888)-282-5810 (Phone)  
(818)-707-0392 (Fax)  
[order@abiocode.com](mailto:order@abiocode.com)  
Web: [www.Abiocode.com](http://www.Abiocode.com)

---

## **SDAD1 (N) Antibody, Rabbit Polyclonal**

**Cat#: R2031-1**

**Quantity: 100 ul**

**Predicted | Observed M.W.: 80 | 75, 90 kDa**

**Lot#: Refer to vial**

**Application: WB**

**Uniprot ID: Q9NVU7**

### **Background:**

Protein SDA1 homolog (SDAD1) belongs to the SDA1 family and is required for 60S pre-ribosomal subunits export to the cytoplasm.

### **Other Names:**

Protein SDA1 homolog, NUC130, Nucleolar protein 130, SDA1 domain-containing protein 1, hSDA

### **Source and Purity:**

Rabbit polyclonal antibodies were produced by immunizing animals with a GST-fusion protein containing the N-terminal region of human SDAD1. Antibodies were purified by affinity purification using immunogen.

### **Storage Buffer and Condition:**

Supplied in 1 x PBS (pH 7.4), 100 ug/ml BSA, 40% Glycerol, 0.01% NaN<sub>3</sub>. Store at -20 °C. Stable for 6 months from date of receipt.

### **Species Specificity:**

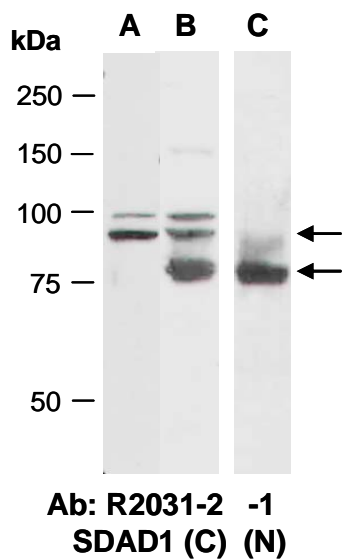
Human, Mouse

### **Tested Applications:**

WB: 1:1,000-1:3,000 (detect endogenous protein\*)

\*: The apparent protein size on WB may be different from the calculated M.W. due to modifications.

**Product Data:**



**Fig 1.** Western blot of total cell extracts from (A) mouse brain, (B, C) human HeLa, using 2 independent Abs against 2 distinct regions of human SDAD1 at RT for 2 h. The 75 kD and 90 kD bands may represent 2 isoforms of SDAD1.