



Order: (888)-282-5810 (Phone)  
(818)-707-0392 (Fax)  
[order@abiocode.com](mailto:order@abiocode.com)  
Web: [www.Abiocode.com](http://www.Abiocode.com)

---

## **RPS6KA5 (N) Antibody, Rabbit Polyclonal**

**Cat#: R1309-1**

**Quantity: 100 ul**

**Predicted | Observed M.W.: 90 kDa**

**Lot#: Refer to vial**

**Application: WB**

**Uniprot ID: O75582**

### **Background:**

Ribosomal protein S6 kinase alpha-5 (RPS6KA5) belongs to the protein kinase superfamily, the AGC Ser/Thr protein kinase family, and the S6 kinase subfamily. RPS6KA5 is a serine/threonine-protein kinase that is required for the mitogen or stress-induced phosphorylation of the transcription factors CREB1 and ATF1 and for the regulation of the transcription factors RELA, STAT3 and ETV1/ER81, and that contributes to gene activation by histone phosphorylation and functions in the regulation of inflammatory genes. RPS6KA5 phosphorylates CREB1 and ATF1 in response to mitogenic or stress stimuli such as UV-C irradiation, epidermal growth factor (EGF) and anisomycin. Additionally, RPS6KA5 plays an essential role in the control of RELA transcriptional activity in response to TNF and upon glucocorticoid, associates in the cytoplasm with the glucocorticoid receptor NR3C1 and contributes to RELA inhibition and repression of inflammatory gene expression.

### **Other Names:**

Ribosomal protein S6 kinase alpha-5, S6K-alpha-5, 90 kDa ribosomal protein S6 kinase 5, Nuclear mitogen- and stress-activated protein kinase 1, RSK-like protein kinase, RSKL, MSK1

### **Source and Purity:**

Rabbit polyclonal antibodies were produced by immunizing animals with a GST-fusion protein containing the N-terminal region of human RPS6KA5. Antibodies were purified by affinity purification using immunogen.

### **Storage Buffer and Condition:**

Supplied in 1 x PBS (pH 7.4), 100 ug/ml BSA, 40% Glycerol, 0.01% NaN<sub>3</sub>. Store at -20 °C. Stable for 6 months from date of receipt.

### **Species Specificity:**

Human

### **Tested Applications:**

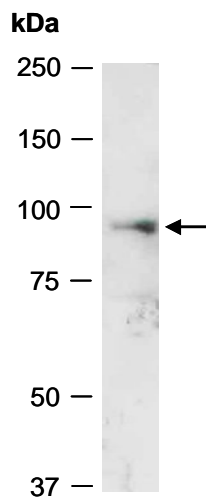
WB: 1:1,000-1:3,000 (detect endogenous protein\*)

\*: The apparent protein size on WB may be different from the calculated M.W. due to modifications.

---

**For research use only. Not for therapeutic or diagnostic purposes.  
Abiocode, Inc., 29397 Agoura Rd., Ste 106, Agoura Hills, CA 91301**

**Product Data:**



**Fig 1.** Western blot of total cell extracts from human HeLa; using using anti- RPS6KA5 (N) (R1309-1) at RT for 2 h.